

High quality mortar solution

SKAMOTEC EASYMIX



Technical data

Compressive strength	5 MPa
Density (wet)	1,500 kg/m ³ Water vapour diffusion coefficient ≤ 7
Chromate content	< 2 mg/kg cement
Chloride content	0.003 weight %
Net weight	18 kg
Non-combustibility	A1
HS Tariff number	28245090
Added water	260-270 mL per 1 kg dry universal mortar (4.7 – 4.9 L per bag)
Pouring temperature	Between +5° and +25°C
Opening time	Approx. 20-30 min. at +20°C
Yield	1 kg dry universal mortar makes approx. 0,65 L wet mortar

Skamol A/S

Østergade 58-60
DK-7900 Nykøbing Mors
Denmark

Tel: +45 9772 1533

Fax: +45 9772 4975

Visit us at www.skamol.com, www.skamol.fr or www.skamol.de



SKAMOTEC EASYMIX

Universal mortar for jointing, filling and surface finishing



SKAMOTEC EASYMIX is a fast curing cement and fibre based lightweight universal mortar that requires only the addition of water. It is used for both jointing, filling and surface finishing that can be used when building a fireplace enclosure or general buildings with climate boards.

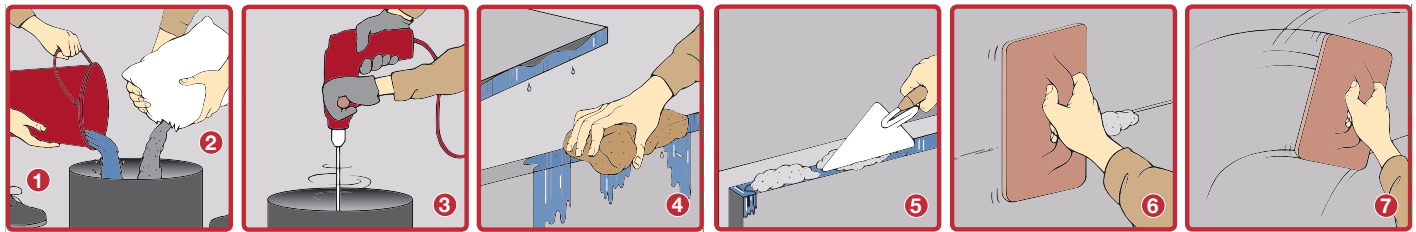
Coverage

Consumption 1.1 kilo per mm. per m²

Example

Layer thickness 2 mm: 8.2 m²

Layer thickness 8 mm: 2.0 m²



Preparation

The surface must be firm and dust free. The SKAMOTEC 225 boards must be moistened thoroughly with water before applying SKAMOTEC EASYMIX, due to the materials absorbent properties.

Mixing

The water is first poured into the tub. SKAMOTEC EASYMIX is then added and the mixture is blended thoroughly for at least 5 minutes to the desired consistency in a suitable agitator mixer. Manual mixing can be done with a low-speed drill with a suitable whisk attached.

Why SKAMOTEC EASYMIX?

- SKAMOTEC EASYMIX has a particularly good workability and hardens faster than other similar products. The products main components are a special fast curing cement and microsilica.
- Fast and easy installation
- Fits with SKAMOTEC 225 boards

How it works

You can use different tools and below you can see the result on surface with these tools. The results are made with the recommended mixing.

Tips & Tricks

To minimize the risk of cracks reinforced fibre glass mesh can be applied between two layers. Note that the first layer will dry up quicker than the subsequent layers. Higher temperatures will shorten, and lower temperatures will lengthen both the processing and hardening times.

Warning: Work with SKAMOTEC EASYMIX should not be done at temperatures below +5°C, and the mortar does not tolerate frost or rain in the setting and curing period.

