



THE LIMEHOUSE LAMP COMPANY LTD

FINE ENGLISH LIGHTING

SIXTH EDITION



The Limehouse Lamp Company Ltd

Founded in 1971 The Limehouse Lamp Company started by faithfully restoring and replicating original antique lighting from our Victorian Pub premises, in London's East End area of Limehouse. With St Catherine's Dock on our doorstep, the modern Docklands of today was non-existent. No high rise office buildings, just the historic London dating back centuries and most of Victorian London's architecture and docks still in existence. From these humble beginnings re-creating Victorian carriage lamps, our range of products grew to the large collection of indoor and outdoor lighting we produce today.

All our products are hand made with the majority of work done in our workshops at our Sussex based premises. Every item is built and hand finished by our craftsmen, who have over 100 years of combined experience making traditional lighting. Working in only solid brass and copper, each item is soldered by hand using traditional methods. Heavy parts are all cast in sand and finished by hand giving our lights the artisan quality of original pieces, with no two items being exactly the same.

A large number of our range of products are reproduced from original antiques and our hand finishing processes and traditional manufacturing methods give our lights a unique quality that makes each item feel original.

Our collections combine interior and exterior lighting covering periods of over 200 years from the early 1700's to the 1930's offering designs of grandeur and style. Our historic ranges of Industrial and Nautical Lighting offer replica lighting used throughout Victorian and Edwardian daily life. From the railways, ships and even taverns of emerging industrial England and America.

Our lighting is sold throughout the world and has been used in stately homes, castles, public houses, museums, films and even in the mystical world of Harry Potter at Universal Studios. We have lights to suit almost any period property and are accredited to wire for any country on the globe.

Please feel free to contact our experienced team for advice or any information you may need.

We Look forward to hearing from you.



THE GUILD
OF MASTER CRAFTSMEN



WHERE THE MAGIC HAPPENS



OUR 8000 SQ/FT FACILITY NESTLED IN THE SUSSEX SOUTH DOWNS



IT TAKES APPROXIMATELY 3 YEARS TO TRAIN A CRAFTSMAN TO BUILD OUR LIGHTS.



EACH ITEM IS BUILT, WIRED, FINISHED, TESTED AND PACKED WITH PRIDE.

IP Ratings Explained



Bathroom use for EU/UK installation in Zone 2 of a Bathroom. Splash proof. Uses G9 Bulbs.



Rain Water up to 60 degrees from the vertical (Suitable outside of a splash zone). 1.2m from the ground.



Adapted for EU/UK exterior use, can be used for installation in Splash Zones. Uses G9 Bulbs.



Hanging Lights Suitable for use in a covered area such as porch.

Please consult a qualified electrician for advice on suitable IP rating required.

Recommended Bulb Shapes



GLS

GLS Shape
US Type (A19)



CANDLE

Candle Shape
US Type (B9)



GOLFBALL

Golf Ball Shape
US Type (A15)



PYGMY

Pygmy Shape
US Type (T8)



GU10

GU10 Shape
US Type (MR16)

Other Icons



Standard chain length supplied with product. Please specify if extra chain is required.



Available in UL/CSA specifications for US and Canadian markets.



Not Available in UL/CSA specifications for US and Canadian markets.

Polished Finishes

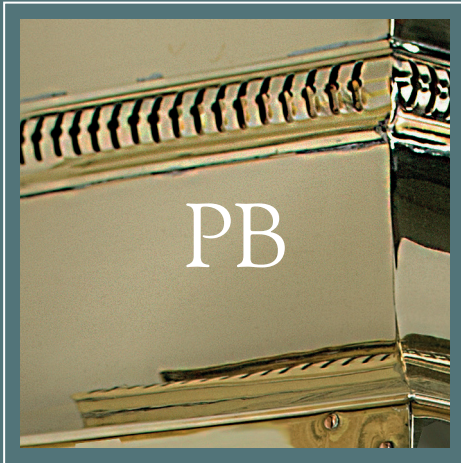
Polished natural finishes will patina in time and require polishing with brass polish if a shiney new appearance is desired. We feel, however leaving the item to mellow to its natural colour improves the look of our products.

We can lacquer our products to keep their new appearance and will only require routine cleaning.

Polished Lacquered Finish

Order Code Suffix (PB)

The item is polished and lacquered to obtain a bright and glossy appearance. Requires the occasional clean with a damp cloth and is suitable for interior lights or external products. Please note: We do not recommend a lacquered finish on external lights near coastal areas as salt degrades the lacquered finish very quickly.



Un-Lacquered Natural Finish

Order Code Suffix (PBUL)

The item is polished only and will gradually tarnish and mellow in colour. Alternatively cleaning with brass polish will retain a bright finish. Recommended for interior and exterior use.



Antique Finishes

Antique natural finishes are our most popular for our ranges. We finish each item individually by hand. The Distressed finish (AB) is perfect for making an item look like an original piece. Products finished this way have a mellow appearance making them feel as if they were produced decades ago. Old Antique (ANT) gives a very aged appearance similar to wrought iron in colour. This finish works brilliantly on old stone or brick work and will look perfectly in place on any period property. With Antique Relief (ANT/REL) finish our experienced craftsmen will relief polish features to your requirements in order to highlight details you may wish to stand out (Note: Special order).

Distressed Finish

Order Code Suffix (AB)

The item is degreased and soaked in a chemical that physically ages the metal. It is then polished back to reveal the metal beneath. This finish will mellow with age and requires no cleaning or maintenance to keep its appearance. Recommended for interior and exterior use.



Old Antique Finish

Order Code Suffix (ANT)

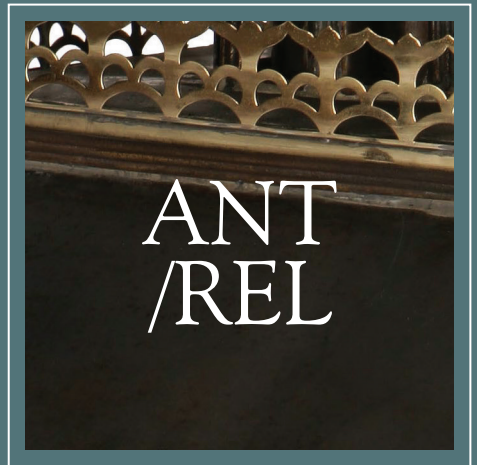
The item is degreased and soaked in a chemical that physically ages the metal. The finish is a greyish bronze and requires no cleaning or maintenance to keep its appearance. The fitting will look as if it has tarnished for decades. Recommended for interior and exterior use.



Antique Relief Finish

Order Code Suffix (ANT/REL)

As Antique (ANT) however we relief polish details of the individual light to give a true custom appearance. (Special order - please contact us to discuss).

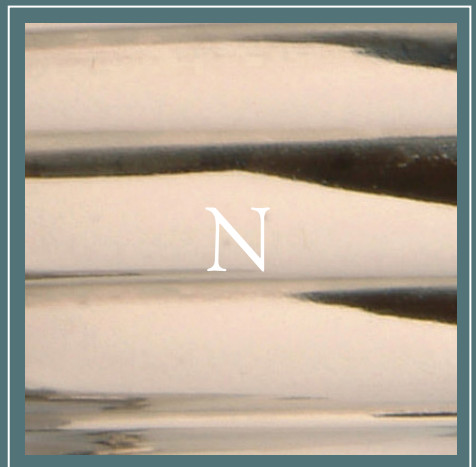


Plated Finishes

Most designs are available in polished nickel (N) and are shown on each product page where this is applicable. Nickel patinates in the same way as silver and can be polished easily to keep a bright appearance (much like cleaning the family silver). However it does mellow to a lovely warm classical appearance. Polished copper (C), we can copper plate almost all products, however we only offer it as a standard finish on our Art Deco Gatsby wall lights and Blenheim picture lights, again we recommend unlacquered in order for the colour to become more natural over time. Bronze finish (BZ) is available as an option on Gatsby lights only.

Nickel (Unlacquered) Order Code Prefix (N)

The item is de-greased and soak cleaned, followed by an electric clean bath to remove any further impurities that may cause de-lamination. The item is then Nickel plated with a minimum of 10 microns of Nickel (more than twice the minimum requirement for BSEN-12540). The product is then polished ready for use.



Note: Nickel and Copper plated items are supplied un-lacquered which will dull over time. The items can be easily re-polished to an original state using metal polish. However if you require fittings lacquered (only recommended for interior use). Please specify lacquered finish when ordering.

Copper (Unlacquered)

Order Code Prefix (C)

The item is de-greased and soak cleaned, followed by an electric clean bath to remove any further impurities that may cause delamination. The item is then Copper plated with a minimum of 10 microns of Copper (more than twice the minimum requirement for BSEN-12540). The product is then polished ready for use.



Bronze Order

Code Suffix (BZ)

The item is degreased and soaked in a chemical that bronzes the metal. It is then cleaned and lacquered to achieve a natural bronze finish. Requires the occasional clean with a damp cloth and is not suitable for exterior use.





NEW RELEASES FOR 2020



Forword

For 2019 and 2020 we are delighted to launch several new ranges. I have designed these through inspiration from various places, events and passions. My effort is always to create and re-create unique pieces that gives the more discerning customer a palette of unique and timeless lighting designs.

The new extra large Balmoral Hanging Lantern on page 14 has been designed from numerous customers and having made several, I felt it suitable to offer as part of our existing range.

The Parisienne collection featured on pages 15 to 21 are inspired by the architecture of The Palais du Coeur, The Louvre and surrounding buildings of the Left Bank of the Seine. I wanted an imposing yet elegant collection with simple structured lines. Hand made in solid brass they make a charming statement on larger Period buildings.

The Ivy collection on pages 22 to 25 are named after my new-born niece. I was inspired to create a fresh collection that would bring a different and special light to its surroundings, much like there namesake. The hand laid lattice work creates a theatrical experience in light that feels like a garden space at night. The result has to be seen to be appreciated. The effect is intimate and romantic. Also, hand crafted in Solid Brass the Ivy collection adds a unique feature to our range.

I created the Velsheda wall lights pages 26 and 27 from my passion for sailing. Named after the most famous J class racing yacht. Velsheda was built in 1933 for the owner of Woolworth shops by Camper and Nicholson and was one of the most successful

racing yacht in her class of these beautiful super yachts. Velsheda was refitted in the late 1990's and continues to this day to be the centre of attention at world regattas. The wall lights in this series recreate the style used in her refit. Made of cast brass and machined brass details the collar recreates the look of the gimballed original lights on board. Machined meticulously to give a real yacht quality feel. They give a soft warm light and have a distinctive nautical style.

The La Luna Wall lights pages 28 and 29 features a convex hand hammered reflector. This has a visual effect of creating an aura around the light source. The reflections change and play as you move around the light and creates a warm inviting glow. Made of solid brass with hidden fixings, the look is very clean and makes the statement of a style piece in its own right. Perfect for areas where ambiance is the key.

The Oyster wall lights on page 30 and 31 are sculptures in their own right. Cast in solid brass, they are cast from wood carvings of original shells. Shimmering from all angles they are truly unique. The oyster being a symbol of luxury these lights certainly exude this element. Hand finished to order they make a unique addition to an eclectic interior.

I hope you enjoy these classic new additions to our ranges.

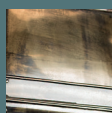
Elliott Maurice – Managing Director

NEW!

Finishes
Available
for this
Collection



ANT



AB



PBUL



PB



AB
SHOWN

Extra Large Balmoral Pendant 425AAH.

Balmoral Hanging Lantern (Extra Large) w 4 Light cluster shown in AB (Distressed Brass) finish.

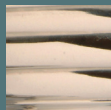
Our Victorian Classic Balmoral Hanging Lanterns are replicas of original gas lanterns used throughout Victorian London. Made of solid brass with copper detail this is largest hanging lantern we offer.

Wattage: 4 x 60w SES
Height: 930mm / 35.75"
Width: 460mm / 18"
Depth: 460mm / 18"

NEW!



Finishes
Available
for this
Collection



N



ANT



AB



PBUL



PB



PB
SHOWN

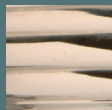
Extra Large Parisienne Hanging Lantern 512AA.

The Parisienne Hanging Lantern (Extra Large), shown in PB (Polished Lacquered Brass) finish, is hand crafted in Solid Brass. The Parisienne lanterns are inspired by classic French architecture. Made with intricate fretwork and simple proportioned lines. These elegant lanterns perfect for a grand entrance, or high-ceilinged hallway.

Wattage: 4 x 60w SES
Height: 750mm / 29.50"
Width: 435mm / 17.25"
Depth: 435mm / 17.25"

NEW!

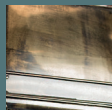
Finishes
Available
for this
Collection



N



ANT



AB



PBUL



PB



ANT
SHOWN

Large Parisienne Hanging Lantern 512A.

The Parisienne Hanging Lantern (Large), shown in ANT (Old Antique) finish, is hand crafted in solid brass. Featuring a 4 light cluster it offers an elegant period solution, where a grand lantern is required. They look fantastic in a hallway, porch or over a kitchen island where an opulent piece is required.

Wattage: 4 x 40w SES
Height: 630mm / 24.75"
Width: 345mm / 13.25"
Depth: 345mm / 13.25"



AB
SHOWN

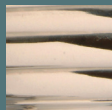
Small Parisienne Hanging Lantern 512.

The smallest hanging lantern in the Parisienne collection hand made in solid brass, shown in ANT (Old Antique) finish. This size perfectly complements its larger siblings. Either used in series in a hallway or standalone it makes an elegant addition to any period scheme.

Wattage: 1 x 100w ES
 Height: 530mm / 20.75"
 Width: 285mm / 11.25"
 Depth: 285mm / 11.25"

NEW!

Finishes
Available
for this
Collection



N



ANT



AB



PBUL



PB



AVAILABLE



PB
SHOWN

Small Parisienne Passage Lantern 513.

The Parisienne Passage Lantern (Small) hand crafted in solid brass. PB (Polished Lacquered Brass) finish. IP23 (rain water) standard IP44 (splash proof) versions are available. Suitable for exterior and interior applications. These flush mounted versions have less wall projection and more compact dimensions than the bracket versions.

Wattage: 1 x 60w SES
Height: 435mm / 17.5"
Width: 285mm / 11.25"
Depth: 200mm / 7.9"



ANT
SHOWN

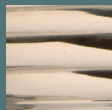
Large Parisienne Passage Lantern 513A.

The Parisienne Passage Lantern (Large), shown in ANT (Old Antique) finish, hand crafted in solid brass. IP23 (rain water) standard IP44 (splash proof) versions are available. Suitable for exterior and interior applications. The larger of the flush mounted versions where a more imposing lantern would suit.

Wattage: 2 x 40w SES
Height: 510mm / 20"
Width: 350mm / 13.75"
Depth: 255mm / 10"

NEW!

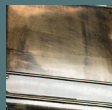
Finishes
Available
for this
Collection



N



ANT



AB



PBUL



PB



AVAILABLE



IP23

ANT
SHOWN

Small Parisienne Wall Lantern 511.

The Parisienne Wall Lantern (Small) hand crafted in Solid Brass. Shown in ANT (Old Antique) finish. IP23 (rain water) standard IP44 (splash proof) versions are available. This lantern suitable for larger properties is perfect for framing an entrance. Created in the style of early 19th Century French lanterns used throughout right bank area of the Seine.

Wattage: 1 x 100w ES
Height: 670mm / 26.5"
Width: 305mm / 11"
Depth: 390mm / 15.25"

NEW!



AVAILABLE



N
SHOWN

Large Parisienne Wall Lantern 511A.

The Parisienne Wall Lantern (Large) hand crafted in Solid Brass. Shown in N (Polished Nickle finish). IP23 (rain water) standard IP44 (splash proof) versions are available. This largest bracket lantern features a 4 light cluster for added drama. This fabulous period lantern is perfect for finishing off the exterior of a grand building.

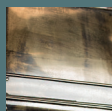
Wattage: 4 x 40w SES
Height: 800mm / 31.5"
Width: 340mm / 13.3"
Depth: 380mm / 18"

NEW!

Finishes
Available
for this
Collection



ANT



AB



PBUL



PB



AB
SHOWN

Small Ivy Hanging Lantern 533.

The Small Ivy Hanging Lantern is hand made in solid brass. Shown in AB (Distressed Brass) finish with a single light. The hand formed lattice panels diffuse the light and creates a trellis pattern on surrounding walls. Thereby creating a dramatic effect in light that gives the feeling of being outside on summer evening. This model is the smallest hanging lantern in the range.

Wattage: 1 x 100w ES
Height: 460mm / 18.25"
Width: 185mm / 7.25"
Depth: 185mm / 7.25"



ANT
SHOWN

Large Ivy Hanging Lantern 533A.

The Large Ivy Hanging Lantern is also hand made in solid brass. Shown in ANT (Old Antique) finish with a four light cluster. Suitable for larger spaces, over a table or island it makes a lovely feature in any setting. Entirely fabricated by hand with meticulous attention to detail.

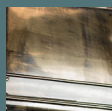
Wattage: 4 x 40w SES
Height: 700mm / 27.50"
Width: 300mm / 11.75"
Depth: 300mm / 11.75"

NEW!

Finishes
Available
for this
Collection



ANT



AB



PBUL



PB



**PBUL
SHOWN**

Large Ivy Wall Lantern 532A.

The Large Ivy Wall Lantern made of solid brass. Shown in PBUL (Unlacquered Natural Brass). It has 2 candelabras internally. This lantern is suitable for exterior and interior use. Made as IP23 as standard it is also available in IP44 for areas requiring a splash proof rating. Meticulously built by hand these lanterns are truly unique.

Wattage: 2 x 40w SES
Height: 540mm / 21.25"
Width: 300mm / 11.80"
Depth: 255mm / 10"



ANT
SHOWN

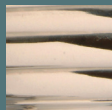
Small Ivy Wall Lantern 532.

The Small Ivy Wall Lantern made of solid brass. Shown in ANT (Old Antique) finish). It has a single candelabra internally. This lantern is suitable for exterior and interior use. Made as IP23 as standard, it is also available in IP44 for areas requiring a splash proof rating.

Wattage: 1 x 60w SES
Height: 360mm / 14.75"
Width: 200mm / 7.9"
Depth: 155mm / 6.1"

NEW!

Finishes
Available
for this
Collection



N



AB



PBUL



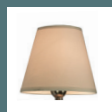
PB



White



Black



Ivory



N
SHOWN

Velsheda Wall Sconce 723.

The Velsheda wall light is made of cast and machined solid brass. Shown in N (Polished Nickel Finish) with a white shade (included). Inspired by the historic J Class racing yacht Velsheda. The collection has classic nautical overtones. With machined brass gimbal locks and ribbed trim.

Wattage: 1 x 40w SES
Height: 455mm / 19.5"
Width: 180mm / 7"
Depth: 280mm / 11"



PB
SHOWN

Velsheda Twin Wall Sconce 723T.

The twin version of the Velsheda wall light shown in PB (Polished Lacquered Brass) adds a bigger and more imposing element to this Nautical themed wall light. Classically styled along the lines of the art deco interior of Velsheda, this heavy brass collection offers a nautical twist on an enduring and timeless era of elegance. The Velsheda Wall Lights are supplied complete with shades and available in all our classic finishes.

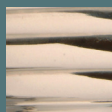
Wattage: 2 x 40w SES
Height: 455mm / 19.5"
Width: 385mm / 15"
Depth: 250mm / 9.75"

NEW!

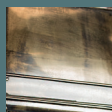
Finishes
Available
for this
Collection



ANT



N



AB



PBUL



PB



N
SHOWN

Small La Luna Wall Sconce 846.

The La Luna Wall Light (Small) is hand crafted in solid brass Shown in N (Polished Nickel Finish). Featuring a hammered convex reflector with over 500 facets.

This smaller sized curved reflector creates a dramatic effect, capturing reflections and shadows from every angle. Inspired by moonlight on water, we wanted to recreate this visual effect in a wall light.

Wattage: 1 x 60w SES
Height: 330mm / 13"
Width: 220mm / 8.75"
Depth: 170mm / 6.6"



PBUL
SHOWN

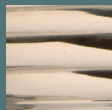
Large La Luna Wall Light 846A.

The La Luna Wall Light (Large) is hand made of solid brass Shown in PBUL (Polished Unlacquered Brass). Featuring a hammered convex reflector with over 800 facets. Hammered by hand the convex plate shimmers as it refracts lights and shadows. These lights create an intimate environment and mimic a candle effect.

Wattage: 1 x 60w SES
Height: 440mm / 17.30"
Width: 350mm / 13.75"
Depth: 170mm / 6.6"

NEW!

Finishes
Available
for this
Collection



N



AB



PBUL



PB



N
SHOWN

Small Oyster Wall Light 848.

The Oyster Wall Light (Small) shown in N (Polished Nickel finish). Made using lost wax cast in solid brass created from a wooden carving of an original Oyster shell. Available in 2 sizes. This heavy hand-crafted wall light shimmers and reflects like the shell it was fashioned after. Reflections and shadows change as you move around the piece creating a warm and unique setting.

Wattage: 1 x 60w SES
Height: 330mm / 13"
Width: 330mm / 13"
Depth: 160mm / 6.3"



PB
SHOWN

Large Oyster Wall Light 848A.

The Oyster Wall Light (Large) shown in PB (Polished Lacquered Brass). This larger version of the Oyster wall light is cast from over 5kg of solid brass, instead of using a pressed brass shape. We chose to have these cast to give a true sculptured appearance. Finished by hand, they are truly unique in appearance and make a show piece on any wall.

Wattage: 1 x 60w SES
Height: 360mm / 14.25"
Width: 360mm / 14.25"
Depth: 160mm / 6.3"



EXTERIOR WALL LIGHTS,
LAMP POSTS & GATE POST
LIGHTS, HANGING
PORCH & HALL LANTERNS



Please enjoy our Timeless Interior Collections, ranging from Classic Victorian & Edwardian Gasoliers, through to 17th Century Cast Gothic Pieces. All our interior lights are hand made and hand finished to order, we can accommodate any electrical standard in the world. Products traditionally take between 3 to 5 weeks to make with Nickel taking slightly longer due to plating process. We strive to recreate the ambience and timeless quality of the original antique pieces. We are certain that you will appreciate owning one of our classic reproduction lights.

Featuring model 425OP3 (PBUL) Page 61 Country Home in Utah USA.
Refurbishment and photo by Jackson and Leroy. Architect: McAlpine House,
Landscape Architect: Kaiser Trabue and Designer: Rochelle Warner





Featuring model 435AP3 (ANT) Page 48
Beach House, Connecticut – USA



Featured Model 471 (N) Page 50
Luxury Mansion Block, Knightsbridge – UK



Featured Model 492A (AB) Page 44
County Estate, Côte d'Azur – France



Featured Model 475A (AB) Page 55
Converted Barn, Surrey – UK



Featured Model 501A (ANT/REL) Page 57
New Build Mansion, Oslo – Norway



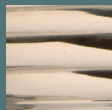
Featured Model 433 (ANT) Page 48
The Duke of Marlborough Hotel, Russell – New Zealand Designer: Barry Heath – Decora



Featured Model: 425AF (ANT) Page 65
The Coach House Boutique B&B, Dromore – Northern Ireland

NEW!

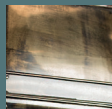
Finishes
Available
for this
Collection



N



ANT



AB



PBUL



PB



Parisiennne Lanterns



**PB
SHOWN**

Parisiennne Hanging Lantern (Extra Large) 512AA. *Made of Solid Brass shown in PB (Polished Lacquered Brass). Suitable for covered areas only.*

Wattage: 4 x 60w SES
Height: 750mm / 29.50"
Width: 435mm / 17.25"
Depth: 435mm / 17.25"



AB
SHOWN



Parisienne Hanging Lantern (Large) 512A. Made of solid Brass with 4 light cluster. Shown in AB (Distressed Finish). Suitable for covered areas only.

Wattage: 4 x 40w SES
Height: 630mm / 24.75"
Width: 345mm / 13.25"
Depth: 345mm / 13.25"



AB
SHOWN



Parisienne Hanging Lantern (Small) 512. Made of solid Brass. Shown in AB (Distressed Finish). IP23 standard. Suitable for covered areas only.

Wattage: 1 x 100w ES
Height: 530mm / 20.75"
Width: 285mm / 11.25"
Depth: 285mm / 11.25"



ANT
SHOWN



Parisienne Wall Lantern (Small) 511. Made of solid Brass. Shown in ANT (Old Antique Finish). (IP23 Standard - IP44 Available).

Wattage: 1 x 100w ES
Height: 670mm / 26.5"
Width: 305mm / 11"
Depth: 390mm / 15.25"



PB
SHOWN



Parisienne Wall Lantern (Large) 511A. Made of solid Brass with 4 light cluster. Shown in PB (Polished Lacquered Brass). (IP23 Standard - IP44 Available).

Wattage: 4 x 40w SES
Height: 800mm / 31.5"
Width: 340mm / 13.3"
Depth: 380mm / 18"



ANT
SHOWN



Parisienne Passage Lantern (Large) 513A. Made of solid Brass. Shown in ANT (Old Antique Finish). (IP23 Standard - IP44 Available).

Wattage: 2 x 40w SES
Height: 510mm / 20"
Width: 350mm / 13.75"
Depth: 255mm / 10"



N
SHOWN



Parisienne Passage Lantern (Small) 513. Made of solid Brass. Shown in N (Polished Nickel). (IP23 Standard - IP44 Available).

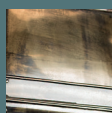
Wattage: 1 x 60w SES
Height: 435mm / 17.5"
Width: 285mm / 11.25"
Depth: 200mm / 7.9"

NEW!

Finishes Available for this Collection



ANT



AB



PBUL



PB



Ivy Lanterns



PB
SHOWN

Small Ivy Hanging Lantern (Small) 533.
*Made of solid Brass. Shown in PB (Polished
Lacquered Brass). Suitable for covered areas only.*

Wattage: 1 x 100w ES
Height: 460mm / 18.25"
Width: 185mm / 7.25"
Depth: 185mm / 7.25"



ANT
SHOWN

Ivy Hanging Lantern (Large) 533A. *Made of
solid Brass with 4 light cluster. Shown in ANT (Old
Antique Finish). Suitable for covered areas only.*

Wattage: 4 x 40w SES
Height: 700mm / 27.50"
Width: 300mm / 11.75"
Depth: 300mm / 11.75"



PB
SHOWN

Ivy Wall Lantern (Large) 532A. *Made of
solid Brass. Shown in PB (Polished Lacquered
Brass). (IP23 Standard - IP44 Available).*

Wattage: 2 x 40w SES
Height: 540mm / 21.25"
Width: 300mm / 11.80"
Depth: 255mm / 10"



ANT
SHOWN

Ivy Wall Lantern (Small) 532. *Made of solid
Brass. Shown in ANT (Old Antique Finish). (IP23
Standard - IP44 Available).*

Wattage: 1 x 60w SES
Height: 360mm / 14.75"
Width: 200mm / 7.9"
Depth: 155mm / 6.1"



Hemingway Lanterns



Hemingway Hanging Lantern (Small) 505. Made of solid Brass. Shown in AB (Distressed Finish). Suitable for covered areas only.

Wattage: 1 x 100w ES
Height: 380mm / 15"
Width: 210mm / 8.25"
Depth: 210mm / 8.25"

Hemingway Hanging Lantern (Large) 505A. Made of solid Brass with 4 light cluster. Shown in AB (Distressed Finish). Suitable for covered areas only.

Wattage: 4 x 40w SES
Height: 540mm / 21.25"
Width: 310mm / 12.2"
Depth: 310mm / 12.2"



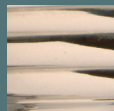
Hemingway Wall Lantern (Small) 506. Made of solid Brass. Shown in AB (Distressed Finish). (IP23 Standard - IP44 Available).

Wattage: 1 x 60w SES
Height: 310mm / 12.2"
Width: 220mm / 8.7"
Depth: 160mm / 6.3"

Hemingway Wall Lantern (Large) 506A. Made of solid Brass with 2 light cluster. Shown in ANT (Old Antique Finish). (IP23 Standard - IP44 Available).

Wattage: 2 x 40w SES
Height: 470mm / 18.5"
Width: 310mm / 12.2"
Depth: 225mm / 8.9"

Finishes
Available
for this
Collection



N



ANT



AB



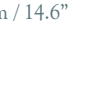
PBUL



PB



Knightsbridge Lanterns



Knightsbridge Pendant (Large) 592A.
*Made of Solid Brass with 4 light cluster.
Shown in ANT (Old Antique Finish).
Suitable for covered areas only.*

Wattage: 4 x 40w SES
Height: 630mm / 24.8"
Width: 370mm / 14.6"
Depth: 370mm / 14.6"

**ANT
SHOWN**



AB
SHOWN

Knightsbridge Wall Lantern 591. *Made of Solid Brass. Shown in AB (Distressed Finish). (IP23 Standard - IP44 Available).*

Wattage: 1 x 60w ES
Height: 390mm / 15.35"
Width: 190mm / 7.5"
Depth: 270mm / 10.65"



PB
SHOWN

Knightsbridge Wall Lantern 5910. *Made of Solid Brass. Shown in PB (Polished Lacquered Brass). (IP23 Standard - IP44 Available).*

Wattage: 1 x 100w SES
Height: 350mm / 13.75"
Width: 190mm / 7.5"
Depth: 270mm / 10.65"



N
SHOWN

Knightsbridge Half Lantern (Small) 593. *Made of Solid Brass. Shown in N (Polished Nickel). (IP23 Standard - IP44 Available).*

Wattage: 1 x 60w SES
Height: 280mm / 11"
Width: 190mm / 7.5"
Depth: 160mm / 6.3"

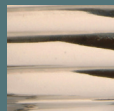


ANT
SHOWN

Knightsbridge Half Lantern (Large) 593A. *Made of Solid Brass. Shown in ANT (Old Antique Finish). (IP23 Standard - IP44 Available).*

Wattage: 2 x 40w SES
Height: 420mm / 16.5"
Width: 290mm / 11.4"
Depth: 210mm / 8.25"

Finishes
Available
for this
Collection



N



ANT



AB



PBUL



PB



Knightsbridge Lanterns



AB
SHOWN

Knightsbridge Pendant (Small) 592.
*Made of Solid Brass. Shown in AB
(Distressed Finish). Suitable for covered
areas only.*

Wattage: 1 x 100w ES
Height: 370mm / 14.6"
Width: 190mm / 7.5"
Depth: 190mm / 7.5"



AB
SHOWN

Knightsbridge Pendant (Medium) 592B. Made of Solid Brass. Shown in AB (Distressed Finish). Suitable for covered areas only.

Wattage: 1 x 100w ES
Height: 480mm / 18.9"
Width: 290mm / 11.4"
Depth: 290mm / 11.4"



N
SHOWN

Knightsbridge Pendant (Medium) 592BP. Made of Solid Brass with 3 light cluster. Shown in N (Polished Nickle). Suitable for covered areas only.

Wattage: 3 x 40w SES
Height: 480mm / 18.9"
Width: 290mm / 11.4"
Depth: 290mm / 11.4"



N
SHOWN

Knightsbridge Pillar Lamp (Short) 591SP. Made of Solid Brass. Shown in N (Polished Nickle). (IP23 Standard - IP44 Available).

Wattage: 1 x 60w ES
Height: 450mm / 17.75"
Width: 190mm / 7.5"
Depth: 190mm / 7.5"

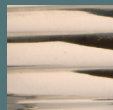


AB
SHOWN

Knightsbridge Pillar Lamp (Tall) 591P. Made of Solid Brass. Shown in AB (Distressed Finish). (IP23 Standard - IP44 Available).

Wattage: 1 x 60w ES
Height: 580mm / 23.2"
Width: 190mm / 7.5"
Depth: 190mm / 7.5"

Finishes
Available
for this
Collection



N



ANT



AB



PBUL



PB



Pagoda Lanterns



CANDLE

**PB
SHOWN**

Pagoda Pendant (Large) 492A. Made of Solid Brass with 3 light cluster. Shown in PB (Polished Lacquered Brass). Suitable for covered areas only.

Wattage: 3 x 60w SES
Height: 680mm / 26.75"
Width: 440mm / 17.35"
Depth: 440mm / 17.35"



PB
SHOWN

Pagoda Wall Lantern 491. Made of Solid Brass. Shown in PB (Polished Lacquered Brass). (IP23 Standard - IP44 Available).

Wattage: 1 x 60w ES
Height: 470mm / 18.5"
Width: 220mm / 8.65"
Depth: 280mm / 11"



AB
SHOWN

Pagoda Overhead Arm Wall Lantern 491O. Made of Solid Brass. Shown in AB (Distressed Finish). (IP23 Standard - IP44 Available).

Wattage: 1 x 100w ES
Height: 450mm / 17.75"
Width: 220mm / 8.65"
Depth: 280mm / 11"



N
SHOWN

Pagoda Pillar Lantern (Tall) 491P. Made of Solid Brass. Shown in N (Polished Nickel). (IP23 Standard - IP44 Available).

Wattage: 1 x 60w ES
Height: 640mm / 25.2"
Width: 220mm / 8.65"
Depth: 220mm / 8.65"

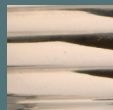


AB
SHOWN

Pagoda Pillar Lantern (Short) 491SP. Made of Solid Brass. Shown in AB (Distressed Finish). (IP23 Standard - IP44 Available).

Wattage: 1 x 60w ES
Height: 500mm / 19.7"
Width: 220mm / 8.65"
Depth: 220mm / 8.65"

Finishes
Available
for this
Collection



N



ANT



AB



PBUL



PB



Pagoda Lanterns



AB
SHOWN

Pagoda Passage Lantern (Small) 493.
*Made of Solid Brass. Shown in AB
(Distressed Finish). (IP23 Standard - IP44
Available).*

Wattage: 1 x 60w SES
Height: 310mm / 12.2"
Width: 345mm / 13.6"
Depth: 165mm / 6.5"



ANT
SHOWN

Pagoda Passage Lantern (Large) 493A. Made of Solid Brass. Shown in ANT (Old Antique Finish). (IP23 Standard - IP44 Available).

Wattage: 2 x 60w SES
Height: 440mm / 17.35"
Width: 345mm / 13.6"
Depth: 240mm / 9.5"



PB
SHOWN

Pagoda Pendant (Small) 492. Made of Solid Brass. Single Light. Shown in PB (Polished Lacquered Brass). Suitable for covered areas only.

Wattage: 1 x 100w ES
Height: 330mm / 13"
Width: 220mm / 8.7"
Depth: 220mm / 8.7"



N
SHOWN

Pagoda Pendant (Medium) 492B. Made of Solid Brass. Single Light. Shown in N (Polished Nickle). Suitable for covered areas only.

Wattage: 1 x 100w ES
Height: 490mm / 19.3"
Width: 340mm / 13.4"
Depth: 340mm / 13.4"

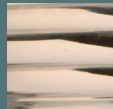


AB
SHOWN

Pagoda Pendant (Medium) 492BP3. Made of Solid Brass with 3 light cluster. Shown in AB (Distressed Finish). Suitable for covered areas only.

Wattage: 3 x 40w SES
Height: 490mm / 19.3"
Width: 340mm / 13.4"
Depth: 340mm / 13.4"

Finishes
Available
for this
Collection



N



ANT



AB



PBUL



PB



Chelsea Lanterns



PB
SHOWN

Chelsea Wall Lantern 433. Made of Solid Copper & Brass. Shown in PB (Polished Lacquered Brass). (IP23 Standard - IP44 Available).

Wattage: 1 x 100w ES
Height: 530mm / 20.9"
Width: 230mm / 9.1"
Depth: 300mm / 11.8"



AB
SHOWN

Chelsea Overhead Wall Lantern 433O. Made of Solid Copper & Brass. Shown in AB (Distressed Finish). (IP23 Standard - IP44 Available).

Wattage: 1 x 100w ES
Height: 420mm / 16.5"
Width: 230mm / 9.1"
Depth: 300mm / 11.8"



N
SHOWN

Chelsea Pendant (Large) 435AP3. Made of Solid Copper & Brass with 3 light cluster. Shown in N (Polished Nickel). Suitable for covered areas only.

Wattage: 3 x 40w SES
Height: 500mm / 19.7"
Width: 350mm / 13.7"
Depth: 335mm / 13.2"



AB
SHOWN

Chelsea Pendant (Small) 435. Made of Solid Copper & Brass Single Light. Shown in AB (Distressed Finish). Suitable for covered areas only.

Wattage: 1 x 100w ES
Height: 330mm / 13"
Width: 230mm / 9.1"
Depth: 230mm / 9.1"



PB
SHOWN

Chelsea Passage Lantern (Tall) 433P. Made of Solid Copper & Brass. Shown in PB (Polished Lacquered Brass). (IP23 Standard - IP44 Available).

Wattage: 1 x 100w ES
Height: 685mm / 27"
Width: 230mm / 9.1"
Depth: 230mm / 9.1"



ANT
SHOWN

Chelsea Pillar Lantern (Short) 433SP. Made of Solid Copper & Brass. Shown in ANT (Old Antique Finish). (IP23 Standard - IP44 Available).

Wattage: 1 x 100w ES
Height: 545mm / 21.5"
Width: 230mm / 9.1"
Depth: 230mm / 9.1"



PBUL
SHOWN

Chelsea Passage Lantern (Small) 434. Made of Solid Copper & Brass. Shown in PBUL (Unlacquered Natural Finish). (IP23 Standard - IP44 Available).

Wattage: 1 x 60w SES
Height: 360mm / 14.2"
Width: 220mm / 8.7"
Depth: 110mm / 4.35"

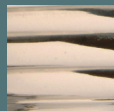


AB
SHOWN

Chelsea Passage Lantern (Large) 434L. Made of Solid Copper & Brass. Shown in AB (Distressed Finish). (IP23 Standard - IP44 Available).

Wattage: 1 x 60w SES
Height: 570mm / 22.5"
Width: 360mm / 14.2"
Depth: 170mm / 6.7"

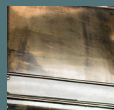
Finishes
Available
for this
Collection



N



ANT



AB



PBUL



PB



Wentworth Lanterns



N
SHOWN

Wentworth Wall Lantern 471. *Made of Solid Brass. With Bevelled Glass. Shown in N (Polished Nickle). (IP23 Standard - IP44 Available).*

Wattage: 1 x 60w ES
Height: 460mm / 18.1"
Width: 170mm / 6.7"
Depth: 280mm / 11"



N
SHOWN

Wentworth Pillar Lantern (Tall) 471P. *Made of Solid Brass. With Bevelled Glass. Shown in N (Polished Nickel). (IP23 Standard - IP44 Available).*

Wattage: 1 x 60w ES
Height: 640mm / 25.2"
Width: 170mm / 6.7"
Depth: 170mm / 6.7"



AB
SHOWN

Wentworth Pillar Lantern (Short) 471SP. *Made of Solid Brass. With Bevelled Glass. Shown in AB (Distressed Finish). (IP23 Standard - IP44 Available).*

Wattage: 1 x 60w ES
Height: 500mm / 19.7"
Width: 170mm / 6.7"
Depth: 170mm / 6.7"



PB
SHOWN

Wentworth Pendant 472. *Made of Solid Brass. With Bevelled Glass. Shown in PB (Polished Lacquered Brass). Suitable for covered areas only.*

Wattage: 1 x 100w ES
Height: 300mm / 11.8"
Width: 170mm / 6.7"
Depth: 170mm / 6.7"

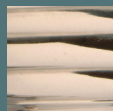


PB
SHOWN

Wentworth Passage Lantern 473. *Made of Solid Brass. With Bevelled Glass. Shown in PB (Polished Lacquered Brass). (IP23 Standard - IP44 Available).*

Wattage: 1 x 60w ES
Height: 420mm / 16.5"
Width: 170mm / 6.7"
Depth: 90mm / 3.6"

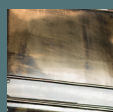
Finishes
Available
for this
Collection



N



ANT



AB



PBUL



PB



Windsor Lanterns



N
SHOWN



Windsor Wall Lantern 481. Made of Solid Brass. With Bevelled Glass. Shown in N (Polished Nickel). (IP23 Standard - IP44 Available).

Wattage: 1 x 60w ES
Height: 420mm / 16.5"
Width: 190mm / 7.5"
Depth: 205mm / 8.1"



PB
SHOWN



Windsor Pendant 482. Made of Solid Brass. With Bevelled. Shown in PB (Polished Lacquered Brass). Glass. Suitable for covered areas only.

Wattage: 1 x 60w ES
Height: 300mm / 11.8"
Width: 190mm / 7.5"
Depth: 190mm / 7.5"



ANT
SHOWN



Windsor Passage Lantern 483. Made of Solid Brass. With Bevelled Glass. Shown in ANT (Old Antique Finish). (IP23 Standard - IP44 Available).

Wattage: 1 x 60w SES
Height: 320mm / 12.6"
Width: 190mm / 7.5"
Depth: 100mm / 4"



Bevelled Glass Lanterns



AB
SHOWN



PB
SHOWN



Bevelled Glass Pendant 410. Made of Solid Brass. With Bevelled Glass. Shown in AB (Distressed Finish). Suitable for covered areas only.

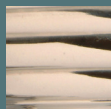
Wattage: 1 x 100w ES
Height: 390mm / 15.35"
Width: 330mm / 13"
Depth: 330mm / 13"



Bevelled Glass Passage Lantern 413. Made of Solid Brass. With Bevelled Glass. Shown in PB (Polished Lacquered Brass). (IP23 Standard - IP44 Available).

Wattage: 1 x 60w ES
Height: 450mm / 17.75"
Width: 330mm / 13"
Depth: 160mm / 6.3"

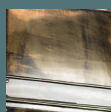
Finishes
Available
for this
Collection



N



ANT



AB

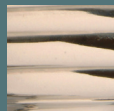


PBUL



PB

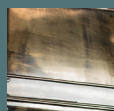
Finishes
Available
for this
Collection



N



ANT



AB



PBUL



PB



Greenwich Lanterns



ANT
SHOWN



AB
SHOWN



Greenwich Lantern (Large) 504A.
Made of Solid Brass. Shown in ANT (Old Antique Finish). (IP23 Standard - IP44 Available).

Wattage: 2 x 60w SES
Height: 800mm / 31.5"
Width: 400mm / 15.75"
Depth: 200mm / 7.9"



Greenwich Lantern 504. *Made of Solid Brass. Shown in AB (Distressed Finish). (IP23 Standard - IP44 Available).*

Wattage: 1 x 60w SES
Height: 465mm / 18.3"
Width: 245mm / 9.65"
Depth: 150mm / 5.9"



Oxbridge Lanterns



AB
SHOWN



PBUL
SHOWN



Oxbridge Wall Lantern (Small) 475. Made of Solid Brass. Shown in AB (Distressed Finish). (IP23 Standard - IP44 Available).

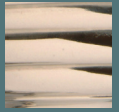
Wattage: 1 x 60w SES
Height: 280mm / 11"
Width: 190mm / 7.5"
Depth: 115mm / 4.5"



Oxbridge Wall Lantern (Large) 475A. Made of Solid Brass. Shown in PBUL (Unlacquered Natural Finish). (IP23 Standard - IP44 Available).

Wattage: 2 x 60w SES
Height: 560mm / 22"
Width: 380mm / 15"
Depth: 200mm / 7.9"

Finishes
Available
for this
Collection



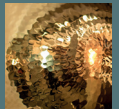
N



ANT



AB

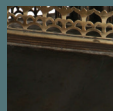


PBUL

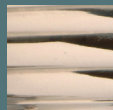


PB

Finishes
Available
for this
Collection



ANT/REL



N



ANT



AB



PBUL



PB



Chateau Lanterns



N
SHOWN

Chateau Wall Lantern (Small) 502.
*Made of Solid Brass. Shown in N (Polished
Nickel). (IP23 Standard - IP44 Available).*

Wattage: 1 x 100w ES
Height: 740mm / 29.15"
Width: 260mm / 10.25"
Depth: 360mm / 14.2"



AB
SHOWN



ANT
SHOWN

Chateau Wall Lantern (Large) 502A. *Made of Solid Brass. Shown in AB (Distressed Finish). (IP23 Standard - IP44 Available).*

Wattage: 1 x 150w ES
Height: 870mm / 34.25"
Width: 370mm / 14.6"
Depth: 455mm / 17.9"

Chateau Passage Lantern 503. *Made of Solid Brass. Shown in ANT (Old Antique Finish). (IP23 Standard - IP44 Available).*

Wattage: 1 x 60w SES
Height: 420mm / 16.5"
Width: 230mm / 9.1"
Depth: 190mm / 7.5"



AB
SHOWN



ANT/REL
SHOWN



N
SHOWN

Chateau Gate Post Lantern (Large) 501A. *Made of Solid Brass. Shown in AB (Distressed Finish). (IP23 Standard - IP44 Available).*

Wattage: 4 x 60w SES
Height: 890mm / 35"
Width: 435mm / 17.15"
Depth: 435mm / 17.15"

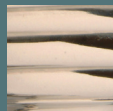
Chateau Gate Post Lantern (Medium) 501B. *Made of Solid Brass. Shown in ANT/REL (Old Antique with Relief Polish Detail). (IP23 Standard - IP44 Available).*

Wattage: 1 x 150w ES
Height: 730mm / 28.75"
Width: 370mm / 14.6"
Depth: 370mm / 14.6"

Chateau Gate Post Lantern (Small) 501. *Made of Solid Brass. Shown in N (Polished Nickel). (IP23 Standard - IP44 Available).*

Wattage: 1 x 100w ES
Height: 570mm / 22.5"
Width: 265mm / 10.4"
Depth: 265mm / 10.4"

Finishes
Available
for this
Collection



N



ANT



AB



PBUL



PB



Strathmore Lanterns



**AB
SHOWN**

Strathmore Wall Lantern (Large)
462A. Made of Solid Brass. Shown in AB
(Distressed Finish). (IP23 Standard - IP44
Available).

Wattage: 2 x 60w SES
Height: 630mm / 24.8"
Width: 360mm / 14.2"
Depth: 200mm / 7.9"



ANT
SHOWN



N
SHOWN

Strathmore Wall Lantern (Small) 462. Made of Solid Brass. Shown in ANT (Old Antique Finish). (IP23 Standard - IP44 Available).

Wattage: 1 x 60w SES
Height: 310mm / 12.2"
Width: 185mm / 7.3"
Depth: 110mm / 4.3"

Strathmore Wall Lantern (Medium) 462B. Made of Solid Brass. Shown in N (Polished Nickel). (IP23 Standard - IP44 Available).

Wattage: 2 x 40w SES
Height: 470mm / 18.5"
Width: 275mm / 10.8"
Depth: 160mm / 6.3"



N
SHOWN



AB
SHOWN



ANT
SHOWN

Strathmore Wall Lantern Slim (Tall) 462SA. Made of Solid Brass. Shown in N (Polished Nickel). (IP23 Standard - IP44 Available).

Wattage: 1 x 60w SES
Height: 390mm / 15.35"
Width: 110mm / 4.3"
Depth: 150mm / 5.9"

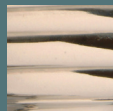
Strathmore Wall Lantern Slim (Short) 462S. Made of Solid Brass. Shown in AB (Distressed Finish). (IP23 Standard - IP44 Available).

Wattage: 1 x 60w SES
Height: 310mm / 12.2"
Width: 110mm / 4.3"
Depth: 150mm / 5.9"

Strathmore Hanging Lantern (Small) 463. Made of Solid Brass. Shown in ANT (Old Antique Finish). Suitable for covered areas only.

Wattage: 1 x 100w ES
Height: 360mm / 14.2"
Width: 185mm / 7.3"
Depth: 185mm / 7.3"

Finishes
Available
for this
Collection



N



ANT



AB



PBUL



PB



N
SHOWN

Large Strathmore Hanging Lantern
463A. Made of Solid Brass. Shown in N
(Polished Nickel). Suitable for covered areas
only.

Wattage: 4 x 40w SES
Height: 570mm / 22.4"
Width: 370mm / 14.6"
Depth: 370mm / 14.6"



ANT
SHOWN

Strathmore Hanging Lantern (Medium) 463B. Made of Solid Brass. Shown in ANT (Old Antique Finish). Suitable for covered areas only.

Wattage: 1 x 150w ES
Height: 460mm / 18.1"
Width: 270mm / 10.7"
Depth: 270mm / 10.7"



AB
SHOWN

Strathmore Wall Lantern (Small) 464. Made of Solid Brass. Shown in AB (Distressed Finish). (IP23 Standard - IP44 Available).

Wattage: 1 x 100w ES
Height: 375mm / 14.8"
Width: 300mm / 11.8"
Depth: 300mm / 11.8"



AB
SHOWN

Strathmore Gate Lantern (Medium) 464B. Made of Solid Brass. Shown in AB (Distressed Finish). (IP23 Standard - IP44 Available).

Wattage: 2 x 100w ES
Height: 530mm / 20.9"
Width: 420mm / 16.5"
Depth: 420mm / 16.5"



AB
SHOWN

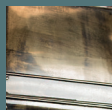
Strathmore Gate Lantern (Large) 464A. Made of Solid Brass. Shown in AB (Distressed Finish). (IP23 Standard - IP44 Available).

Wattage: 4 x 100w ES
Height: 660mm / 26"
Width: 470mm / 18.5"
Depth: 470mm / 18.5"

Finishes
Available
for this
Collection



ANT



AB



PBUL



PB



Balmoral Lanterns



**PBUL
SHOWN**

Balmoral Hanging Lantern
(Extra Large) 425AAH. *Made of Solid
Brass & Copper 4 light cluster. Shown
in PBUL (Unlacquered Natural Finish).
Suitable for covered areas only.*

Wattage: 4 x 60w SES
Height: 930mm / 36.6"
Width: 460mm / 18.1"
Depth: 460mm / 18.1"



PBUL
SHOWN

Balmoral Wall Lantern 425.

Single Light made of Solid Brass & Copper. Shown in PBUL (Unlacquered Natural Finish). (IP23 Standard - IP44 Available).

Wattage: 1 x 150w ES
Height: 725mm / 28.5"
Width: 275mm / 10.8"
Depth: 370mm / 14.6"



AB
SHOWN

Balmoral Wall Lantern 3 Light 425P3. 3 Light made of Solid Brass & Copper. Shown in AB (Distressed Finish). (IP23 Standard - IP44 Available).

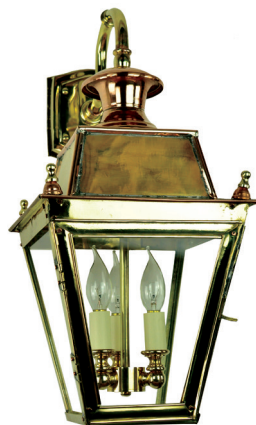
Wattage: 3 x 60w SES
Height: 725mm / 28.5"
Width: 275mm / 10.8"
Depth: 370mm / 14.6"



ANT
SHOWN

Balmoral Overhead Wall Lantern (Large) 425O. 1 Light made of Solid Brass & Copper. Shown in ANT (Old Antique Finish). (IP23 Standard - IP44 Available).

Wattage: 1 x 150w ES
Height: 635mm / 25"
Width: 275mm / 10.8"
Depth: 350mm / 13.8"



AB
SHOWN

Balmoral Overhead Wall Lantern 3 Light 425OP3. 3 Light made of Solid Brass & Copper. Shown in AB (Distressed Finish). (IP23 Standard - IP44 Available).

Wattage: 3 x 60w SES
Height: 635mm / 25"
Width: 275mm / 10.8"
Depth: 350mm / 13.8"

Finishes
Available
for this
Collection



ANT



AB



PBUL



PB



**PBUL
SHOWN**

Balmoral Wall Lantern (Large) 3 Light
425AP3. 3 Light made of Solid Brass &
Copper. Shown in PBUL (Unlacquered
Natural Finish). (IP23 Standard - IP44
Available).

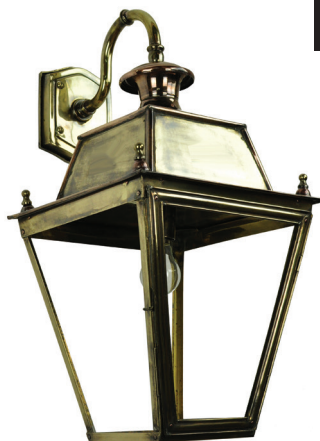
Wattage: 3 x 60w SES
Height: 820mm / 32.3"
Width: 340mm / 13.4"
Depth: 480mm / 18.9"



ANT
SHOWN

Balmoral Wall Lantern (Large) 425A. Single Light made of Solid Brass & Copper. Shown in ANT (Old Antique Finish). (IP23 Standard - IP44 Available).

Wattage: 1 x 150w ES
Height: 820mm / 32.3"
Width: 340mm / 13.4"
Depth: 480mm / 18.9"



AB
SHOWN

Balmoral Overhead Wall Lantern (Large) 425AO. Single Light made of Solid Brass & Copper. Shown in AB (Distressed Finish). (IP23 Standard - IP44 Available).

Wattage: 1 x 150w ES
Height: 735mm / 28.9"
Width: 340mm / 13.4"
Depth: 480mm / 18.9"



AB
SHOWN

Balmoral Overhead Wall Lantern (Large) 3 Light 425AOP3. 3 Light made of Solid Brass & Copper. Shown in AB (Distressed Finish). (IP23 Standard - IP44 Available).

Wattage: 3 x 60w SES
Height: 735mm / 28.9"
Width: 340mm / 13.4"
Depth: 480mm / 18.9"



ANT
SHOWN

Balmoral Pendant (Large) 3 Light 425AHP3. Made of Solid Brass & Copper. Shown in ANT (Old Antique Finish). Suitable for covered areas only.

Wattage: 3 x 60w SES
Height: 700mm / 27.6"
Width: 340mm / 13.4"
Depth: 340mm / 13.4"



AB
SHOWN

Balmoral Pillar Lantern (Short) Single Light 425SP. Made of Solid Copper and Brass. Shown in AB (Distressed Finish). (IP23 Standard - IP44 Available).

Wattage: 1 x 150w ES
Height: 725mm / 28.5"
Width: 275mm / 10.8"
Depth: 275mm / 10.8"



AB
SHOWN

Balmoral Pillar Lantern (Short) 3 Light 425SPP3. With 3 light Cluster. Solid Copper and Brass. Shown in AB (Distressed Finish). (IP23 Standard - IP44 Available).

Wattage: 3 x 60w SES
Height: 725mm / 28.5"
Width: 275mm / 10.8"
Depth: 275mm / 10.8"



AB
SHOWN

Balmoral Pillar Lantern (Tall) 425P. Made of Solid Copper and Brass. Shown in AB (Distressed Finish). (IP23 Standard - IP44 Available).

Wattage: 1 x 150w ES
Height: 865mm / 34.1"
Width: 275mm / 10.8"
Depth: 275mm / 10.8"



AB
SHOWN

Balmoral Pillar Lantern (Tall) 3 Light 425PP3. With 3 light Cluster. Solid Copper and Brass. Shown in AB (Distressed Finish). (IP23 Standard - IP44 Available).

Wattage: 3 x 60w SES
Height: 865mm / 34.1"
Width: 275mm / 10.8"
Depth: 275mm / 10.8"



AB
SHOWN



Balmoral Passage Lantern (Large) 425F. Made of Solid Brass & Copper. Shown in AB (Distressed Finish). (IP23 Standard - IP44 Available).

Wattage: 1 x 100w ES
Height: 490mm / 19.3"
Width: 270mm / 10.6"
Depth: 220mm / 8.7"



ANT
SHOWN



Balmoral Passage Lantern (Large) 425AF. Made of Solid Brass & Copper. Shown in ANT (Old Antique Finish). (IP23 Standard - IP44 Available).

Wattage: 1 x 100w ES
Height: 580mm / 22.8"
Width: 340mm / 13.4"
Depth: 250mm / 9.8"



ANT
SHOWN



Balmoral Pendant 425H. Made of Solid Brass & Copper. Shown in ANT (Old Antique Finish). Suitable for covered areas only.

Wattage: 1 x 150w ES
Height: 560mm / 22.1"
Width: 275mm / 10.8"
Depth: 275mm / 10.8"



ANT
SHOWN



Balmoral Pendant 3 Light 425HP3. Made of Solid Brass & Copper. Shown in ANT (Old Antique Finish). Suitable for covered areas only.

Wattage: 3 x 60w SES
Height: 560mm / 22.1"
Width: 275mm / 10.8"
Depth: 275mm / 10.8"



ANT
SHOWN



Balmoral Pendant (Large) 425AH. Made of Solid Brass & Copper. Shown in ANT (Old Antique Finish). Suitable for covered areas only.

Wattage: 1 x 150w ES
Height: 700mm / 27.6"
Width: 340mm / 13.4"
Depth: 340mm / 13.4"

Finishes
Available
for this
Collection



ANT



AB



PBUL



PB



Kensington Lanterns



**AB
SHOWN**

Kensington Wall Lantern Single Light
431. Made of Solid Brass & Copper. Shown
in AB (Distressed Finish). (IP23 Standard -
IP44 Available).

Wattage: 1 x 100w ES
Height: 650mm / 25.6"
Width: 220mm / 8.7"
Depth: 305mm / 12"



PBUL
SHOWN



Kensington Pendant Single Light 431H. Made of Solid Brass & Copper. Shown in PBUL (Unlacquered Natural Finish). Suitable for covered areas only.

Wattage: 1 x 100w ES
Height: 485mm / 19.1"
Width: 220mm / 8.7"
Depth: 220mm / 8.7"



AB
SHOWN



Kensington Pendant with 3 light Cluster 431HP3. Made of Solid Brass & Copper. Shown in AB (Distressed Finish). Suitable for covered areas only.

Wattage: 3 x 40w SES
Height: 485mm / 19.1"
Width: 220mm / 8.7"
Depth: 220mm / 8.7"



PB
SHOWN



Kensington Overhead Arm Wall Lantern 431O. Single Light. Shown in PB (Polished Lacquered Brass). (IP23 Standard - IP44 Available).

Wattage: 1 x 100w ES
Height: 610mm / 24"
Width: 220mm / 8.7"
Depth: 305mm / 12"



AB
SHOWN



Kensington Passage Lantern Single Light 432. Made of Solid Brass & Copper. Shown in AB (Distressed Finish). (IP23 Standard - IP44 Available).

Wattage: 1 x 100w ES
Height: 420mm / 16.5"
Width: 220mm / 8.7"
Depth: 220mm / 8.7"



AB
SHOWN



Kensington Pillar Lamp (Tall) 431P. Made of Solid Brass & Copper. Shown in AB (Distressed Finish). (IP23 Standard - IP44 Available).

Wattage: 1 x 100w ES
Height: 820mm / 32.3"
Width: 220mm / 8.7"
Depth: 220mm / 8.7"



AB
SHOWN



Kensington Pillar Lamp (Short) 431SP. Made of Solid Brass & Copper. Shown in AB (Distressed Finish). (IP23 Standard - IP44 Available).

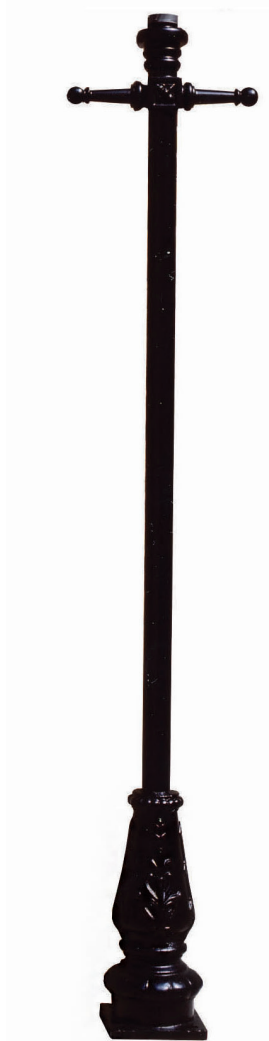
Wattage: 1 x 100w ES
Height: 680mm / 26.8"
Width: 220mm / 8.7"
Depth: 220mm / 8.7"

Finishes
Available
for this
Collection

POST
COLOUR



Victorian Lamp Posts



Cast Iron Victorian Lamp Post (Small)
LP01. Cast Iron Base, Ladder Bar &
Collar. Aluminium. Post Powder Coated
Black.

Post Height: 1930mm
Post Width: 425mm
Post Cap: 50mm



AB
SHOWN

Chelsea Post Mount 433PM. Made of Solid Brass & Copper. Shown in AB (Distressed Finish). (IP23 Standard - IP44 Available).

Wattage: 1 x 100w ES
Height: 440mm / 17.3"
Total Height on LP01: 2320mm / 91.3"
Width: 230mm / 9.1"
Depth: 230mm / 9.1"



AB
SHOWN

Wentworth Post Mount 471 (PM). Made of Solid Brass. Shown in AB (Distressed Finish). (IP23 Standard - IP44 Available).

Wattage: 1 x 100w ES
Height: 395mm / 15.6"
Total Height on LP01: 2275mm / 89.5"
Width: 170mm / 6.7"
Depth: 170mm / 6.7"



AB
SHOWN

Knightsbridge Post Mount 591 (PM). Made of Solid Brass. Shown in AB (Distressed Finish). (IP23 Standard - IP44 Available).

Wattage: 1 x 100w ES
Height: 345 / 13.6"
Total Height on LP01: 2225mm / 87.6"
Width: 190mm / 9.1"
Depth: 190mm / 9.1"

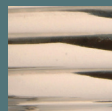


AB
SHOWN

Pagoda Post Mount 491 (PM). Made of Solid Brass. Shown in AB (Distressed Finish). (IP23 Standard - IP44 Available).

Wattage: 1 x 100w ES
Height: 395mm / 15.60"
Total Height on LP01: 2275mm / 89.5"
Width: 220mm / 8.65"
Depth: 220mm / 8.65"

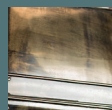
Finishes
Available
for this
Collection



N



ANT



AB



PBUL



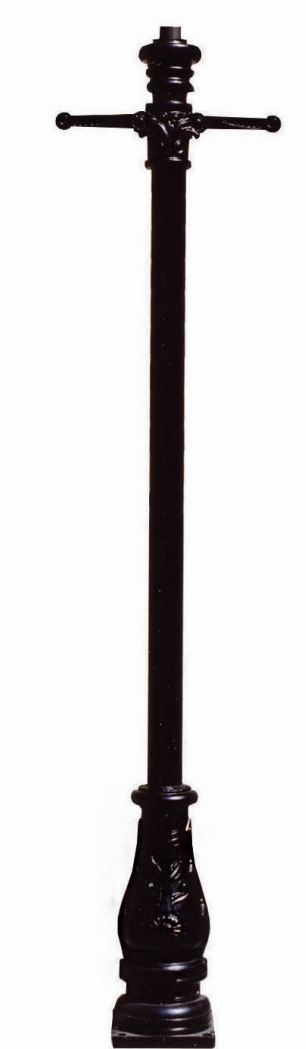
PB

Finishes
Available
for this
Collection

POST
COLOUR



Victorian Lamp Posts



**Cast Iron Victorian Lamp Post
(Medium) LP02.** *Cast Iron Base, Ladder
Bar & Collar. Aluminium. Post Powder
Coated Black.*

Post Height: 2100mm / 82.7"
Post Width: 495mm / 19.5"
Post Cap: 75mm / 2.9"



AB
SHOWN

Balmoral 3 Light Post Mount 425P3 (PM). Made of Solid Brass & Copper. Shown in AB (Distressed Finish). (IP23 Standard - IP44 Available).

Wattage: 3 x 40w SES
Height: 665mm / 26.2"
Total Height on LP02: 2715mm / 106.9"
Width: 275mm / 10.8"
Depth: 275mm / 10.8"



AB
SHOWN

Balmoral Post Mount 425 (PM). Made of Solid Brass & Copper. Shown in AB (Distressed Finish). (IP23 Standard - IP44 Available).

Wattage: 1 x 100w ES
Height: 665mm / 26.2"
Total Height on LP02: 2715mm / 106.9"
Width: 275mm / 10.8"
Depth: 275mm / 10.8"



ANT/REL
SHOWN

Chateau Post Mount 502 (PM). Made of Solid Brass. Shown in Ant/Rel (Antique Finish with Relief Polished Detail). (IP23 Standard - IP44 Available).

Wattage: 1 x 100w ES
Height: 685mm / 27"
Total Height on LP02: 2735mm / 107.7"
Width: 260mm / 10.25"
Depth: 250mm / 10.25"

Finishes
Available
for this
Collection



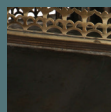
ANT



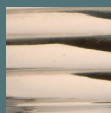
AB



PBUL



ANT/REL



N

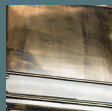
Ant-Rel &
Nickle only
available
on model
502

Finishes
Available
for this
Collection

POST
COLOUR



ANT



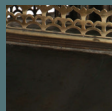
AB



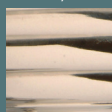
PBUL



PB



ANT/REL



N

Ant-Rel &
Nickle only
available
on model
502A



Cast Iron Victorian Lamp Post (Large) LP03. Cast Iron Base, Ladder Bar & Collar. Aluminium. Post Powder Coated Black

Post Height: 2350mm / 92.5"
Post Width: 495mm / 19.5"
Post Cap: 75mm / 2.9"



PBUL
SHOWN



Balmoral Post Mount 425A
(PM). Made of Solid Brass
& Copper. Shown in PBUL
(Unlacquered Natural Finish).
(IP23 Standard - IP44 Available).

Wattage: 1 x 100w ES
Height: 775mm / 30.5"
Total Height on LP03:
3075mm / 121"
Width: 340mm / 13.4"
Depth: 340mm / 13.4"



AB
SHOWN



Chateau Post Mount 502A
(PM). Made of Solid Brass.
Shown in AB (Distressed
Finish). (IP23 Standard - IP44
Available).

Wattage: 1 x 100w ES
Height: 815mm / 32.1"
Total Height on LP03:
3115mm / 122.6"
Width: 370mm / 10.25"
Depth: 370mm / 10.25"



PB
SHOWN



Balmoral 3 Light Post Mount 425AP3. (PM)
Made of Solid Brass & Copper. Shown in PB (Polished
Lacquered Finish). (IP23 Standard - IP44 Available).

Wattage: 3 x 40w SES
Height: 775mm / 30.5"
Total Height on LP03: 3075mm / 121"
Width: 340mm / 13.4"
Depth: 340mm / 13.4"



INTERIOR COLLECTIONS & HISTORIC LIGHTING



Please enjoy our Timeless Interior Collections, ranging from Classic Victorian & Edwardian Gasoliers, through to 17th Century Cast Gothic Pieces. All our Interior lights are hand made and hand finished to order, we can accommodate any electrical standard in the world. Products traditionally take between 3 to 5 weeks to make with Nickel taking slightly longer due to plating process. We strive to recreate the ambience and timeless quality of the original antique pieces. We are certain that you will appreciate owning one of our classic reproduction lights.



Featured Model 440L (PBUL) Page 75 Private Client – Pennsylvania USA



Featured Model BT24 (PB) Private Client – Surrey – England



Featured Models 650 (PB) Page 83. Photo Courtesy of Divvy House Interiors– Glencoe, Illinois USA



Featured Model 449 (PBUL) Page 76. Photo
Courtesy of no7_is_home – Instagram



Featured Model 721BG (N) Page 87. Photo
Courtesy of no7_is_home – Instagram



Featured Model 733A (AB) Page 80. Photo Courtesy of Maison Inc – Portland, Oregon USA



Featured Models 492B (AB) Page 47 821 (AB) Page 90. *Photo Courtesy of Divvy House Interiors—Glencoe, Illinois*



Featured Models 821 (PB) Page 90. *Private Client – Derbyshire, England*



Featured Model 723T (N) Page 85 *Private Client - Brighton, England*



Historic Railway & Carriage Lighting

AB
SHOWN



Berth Lamp 402. Made of Solid Brass. Shown in AB (Distressed Finish).

Wattage: 1 x 25w SES
Height: 325mm / 12.8"
Width: 80mm / 3.1"
Depth: 100mm / 3.9"



AB
SHOWN



Stable Lamp 414. Made of Solid Brass & Copper. Shown in AB (Distressed Finish).

Wattage: 1 x 60w ES
Height: 295mm / 11.6"
Width: 190mm / 7.5"
Depth: 95mm / 3.75"



ANT
SHOWN



Victoria Station Lamps 437W. Made of Solid Brass, available with Clear or White Glass. Shown in ANT (Old Antique Finish).

Wattage: 1 x 60w ES
Height: 430mm / 16.9"
Width: 355mm / 13.9"
Depth: 415mm / 16.3"



ANT



AB



PBUL



PB

PB
SHOWN



Victoria Station Lamps 437. Made of Solid Brass, available with Clear or White Glass. Shown in PB (Polished Lacquered Brass).

Wattage: 1 x 60w ES
Height: 360mm / 14.1"
Width: 355mm / 13.9"
Depth: 355mm / 13.9"



PBUL
SHOWN



Paddington Station Lamps 440. Made of Solid Copper with Brass Detail, available with Clear or White Glass. Shown in PBUL (Unlacquered Natural Finish).

Wattage: 1 x 100w ES
Height: 535mm / 21"
Width: 375mm / 14.7"
Depth: 375mm / 14.7"



PB
SHOWN



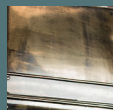
Paddington Station Lamps 440L. Made of Solid Copper with Brass Detail, available with Clear or White Glass. Shown in PB (Polished Lacquered Brass).

Wattage: 1 x 100w ES
Height: 535mm / 21"
Width: 560mm / 22"
Depth: 560mm / 22"

Finishes
Available
for this
Collection



ANT



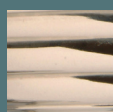
AB



PBUL



PB



N

Nickle only
available
on models
449, 448
and 448w



Nautical Lighting



AB
SHOWN



Deck Lamp 449. *Made of Solid Copper with Brass Detail. Shown in AB (Distressed Finish).*

Wattage: 1 x 100w ES
Height: 295mm / 11.6"
Width: 385mm / 15.1"
Depth: 385mm / 15.1"



PB
SHOWN



Freighter Pendant 450. *Made of Solid Copper with Brass Detail with frosted glass diffuser. Shown in PB (Polished Lacquered Brass).*

Wattage: 1 x 60w ES
Height: 330mm / 13"
Width: 280mm / 11"
Depth: 280mm / 11"



PB
SHOWN



Freighter Wall Lamp 451. *Made of Solid Copper with Brass Detail with frosted glass diffuser. Shown in PB (Polished Lacquered Brass).*

Wattage: 1 x 60w ES
Height: 370mm / 14.6"
Width: 220mm / 8.7"
Depth: 310mm / 12.2"



PB
SHOWN



Freighter Bulkhead 453. *Made of Solid Copper with Brass Detail with frosted glass diffuser. Shown in PB (Polished Lacquered Brass).*

Wattage: 2 x 40w SES
Height: 135mm / 5.3"
Width: 285mm / 11.2"
Depth: 285mm / 11.2"



AB
SHOWN



Smithy's Lamp 452.

Made of Solid Copper with Brass Detail. Shown in AB (Distressed Finish).

Wattage: 2 x 100w ES
Height: 460mm / 18.1"
Width: 560mm / 22"
Depth: 280mm / 11"



AB
SHOWN



Wheelhouse Lamps 448W (IP44). Made of Solid Brass, complete with clear or frosted glass. Shown in AB (Distressed Finish).

Wattage: 1 x 40w SES
Height: 330mm / 13"
Width: 205mm / 8"
Depth: 335mm / 13.2"



N
SHOWN



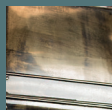
Wheelhouse Lamps 448. Made of Solid Brass, complete with clear or frosted glass. Shown in N (Polished Nickel).

Wattage: 1 x 40w SES
Height: 295mm / 11.6"
Width: 382mm / 15"
Depth: 235mm / 9.2"

Finishes
Available
for this
Collection



ANT



AB



PBUL



PB



Gothic Collection



**AB
SHOWN**

**Gothic Eight Light Pendant with Storm
Glass 719P3P5G.** *Made of Solid Brass,
supplied complete with clear storm glasses.
Shown in AB (Distressed Finish).*

Wattage: 8 x 60w SES
Height: 920mm / 36.2"
Width: 740mm / 29.1"
Depth: 740mm / 29.1"



ANT
SHOWN

Gothic Five Light Pendant with Storm Glass 719P5G. Made of Solid Brass, supplied complete with clear storm glasses. Shown in ANT (Old Antique Finish).

Wattage: 5 x 60w SES
Height: 550mm / 21.6"
Width: 740mm / 29.1"
Depth: 740mm / 29.1"



ANT
SHOWN

Gothic Table Lamps with Storm Glass 719G. Made of Solid Brass, supplied complete with clear storm glasses. Shown in ANT (Old Antique Finish).

Wattage: 1 x 60w SES
Height: 350mm / 13.8"
Width: 115mm / 4.5"
Depth: 285mm / 11.2"



PB
SHOWN

Gothic Wall Light with Storm Glass 752. Made of Solid Brass, supplied complete with clear storm glasses. Shown in PB (Polished Lacquered Brass).

Wattage: 1 x 60w SES
Height: 690mm / 27.1"
Width: 150mm / 5.9"
Depth: 150mm / 5.9"



AB
SHOWN

Gothic Wall Light with Storm Glass 751. Made of Solid Brass, supplied complete with clear storm glasses. Shown in AB (Distressed Finish).

Wattage: 1 x 60w SES
Height: 600mm / 23.6"
Width: 150mm / 5.9"
Depth: 150mm / 5.9"



ANT
SHOWN

Gothic Wall Light with Storm Glass 750. Made of Solid Brass, supplied complete with clear storm glasses. Shown in ANT (Old Antique Finish).

Wattage: 1 x 60w SES
Height: 370mm / 14.6"
Width: 150mm / 5.9"
Depth: 150mm / 5.9"



AB
SHOWN



AB
SHOWN

Large Gothic Hanging Lantern 733A. *Made of Solid Brass. Shown in AB (Distressed Finish).*

Wattage: 3 x 40w SES
Height: 770mm / 30.3"
Width: 250mm / 9.8"
Depth: 250mm / 9.8"

Small Gothic Hanging Lantern 733. *Made of Solid Brass. Shown in AB (Distressed Finish).*

Wattage: 1 x 60w SES
Height: 400mm / 15.7"
Width: 160mm / 6.3"
Depth: 160mm / 6.3"



AB
SHOWN



Large Gothic Wall Light 732A. *Made of Solid Brass. Shown in AB (Distressed Finish).*

Wattage: 2 x 60w SES
Height: 610mm / 4"
Width: 260mm / 10.2"
Depth: 150mm / 5.9"



ANT
SHOWN



Small Gothic Wall Light 732. *Made of Solid Brass. Shown in ANT (Old Antique Finish).*

Wattage: 1 x 40w SES
Height: 280mm / 11"
Width: 170mm / 6.7"
Depth: 80mm / 3.1"



ANT
SHOWN



Vestry Lamp 722. *Made of Solid Brass. Shown in ANT (Old Antique Finish).*

Wattage: 1 x 40w SES
Height: 280mm / 11"
Width: 170mm / 6.7"
Depth: 110mm / 4.3"



Empire Collection



**AB
SHOWN**

Six Arm Empire Chandelier with Storm Glasses 730P6G. *Made of Solid Brass, supplied complete with clear storm glasses. Shown in AB (Distressed Finish).*

Wattage: 6 x 60w SES
Height: 730mm / 28.7"
Width: 820mm / 32.3"
Depth: 820mm / 32.3"

Finishes
Available
for this
Collection



ANT



AB



PBUL

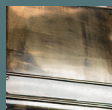


PB

Finishes
Available
for this
Collection



ANT



AB



PBUL



PB

Optional
shades for
models
730P6 &
730



D6 Black



D6(G) Gold



D6(G) Ivory



AB
SHOWN

Six Arm Empire Chandelier 730P6. *Made of Solid Brass. Shown in AB (Distressed Finish).*

Wattage: 6 x 40w SES
Height: 730mm / 28.7"
Width: 820mm / 32.3"
Depth: 820mm / 32.3"



AB
SHOWN



Empire Wall Light 730. *Made of Solid Brass. Shown in AB (Distressed Finish).*

Wattage: 1 x 40w SES
Height: 220mm / 8.7"
Width: 120mm / 4.7"
Depth: 320mm / 12.6"



AB
SHOWN



Empire Wall Light with Storm Glass 730G. *Made of Solid Brass. Shown in AB (Distressed Finish).*

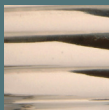
Wattage: 1 x 60w SES
Height: 310mm / 12.2"
Width: 120mm / 4.7"
Depth: 320mm / 12.6"



Broughton Pendant



Finishes
Available
for this
Collection



N



ANT



AB



PBUL



PB

ANT/PB
SHOWN

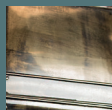
Broughton Pendant 650. *Made of Solid Brass. Shown in ANT (Old Antique Finish).*

Wattage: 4 x 40w SES
Height: 750mm / 29.5"
Width: 540mm / 21.3"
Depth: 540mm / 21.3"

Finishes
Available
for this
Collection



ANT



AB



PBUL



PB



C6 Black



C6 Ivory



C6 Red



Cottage Lighting



AB
SHOWN



Cottage three light pendant 707P3.
Made of Solid Brass. NOTE: shade C6 ivory available seperately. Shown in AB (Distressed Finish).

Wattage: 3 x 40w SES
Height: 480mm / 18.9"
Width: 450mm / 17.7"
Depth: 450mm / 17.7"



AB
SHOWN



Twin Wall Light Made 707T. Made of Solid Brass. NOTE: shade C6 available seperately. Shown in AB (Distressed Finish).

Wattage: 2 x 40w SES
Height: 295mm / 11.6"
Width: 311mm / 12.2"
Depth: 150mm / 5.9"



AB
SHOWN



Cottage Single Wall Light 707. Made of Solid Brass. NOTE: shade C6 red available seperately. Shown in AB (Distressed Finish).

Wattage: 1 x 40w SES
Height: 295mm / 11.6"
Width: 150mm / 5.9"
Depth: 310mm / 12.2"



Velsheda Wall Lights



N
SHOWN



PB
SHOWN



Twin Velsheda Wall Sconce 723T. Made of Solid Brass, supplied with D7 black shades. Shown in N (Polished Nickel).

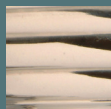
Wattage: 2 x 40w SES
Height: 455mm / 19.5"
Width: 385mm / 15"
Depth: 250mm / 90.75"



Velsheda Wall Sconce 723. Made of Solid Brass, supplied with D7 ivory shade. Shown in PB (Polished Lacquered Brass).

Wattage: 1 x 40w SES
Height: 455mm / 19.5"
Width: 180mm / 7"
Depth: 280mm / 11"

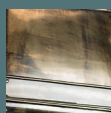
Finishes
Available
for this
Collection



N



ANT



AB



PBUL



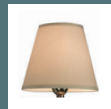
PB



D7 White

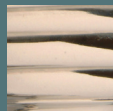


D7 Black



D7 Ivory

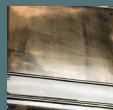
Finishes
Available
for this
Collection



N



ANT



AB



PBUL



PB



Grosvenor Wall Lights



N
SHOWN

Grosvenor Single Wall Light 721.
*Made of Solid Brass. Shown in N (Polished
Nickle). NOTE: shade D6 Black available
seperately.*

Wattage: 1 x 40w SES
Height: 420mm / 16.5"
Width: 80mm / 3.1"
Depth: 190mm / 7.5"



AB
SHOWN

Grosvenor Twin Wall Light

721T. Made of Solid Brass. Shown in AB (Distressed Finish). NOTE: shade D6G ivory available seperately.

Wattage: 2 x 40w SES
Height: 420mm / 16.5"
Width: 280mm / 11"
Depth: 145mm / 5.7"

Optional
Available
Shades



D6 Black



D6(G) Gold



D6(G) Ivory



D6(G) Black



D6 White



AB
SHOWN



AB
SHOWN

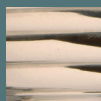
Grosvenor Twin Wall Light with Storm Glass 721TG. Made of Solid Brass. Shown in AB (Distressed Finish).

Wattage: 2 x 60w SES
Height: 550mm / 21.7"
Width: 330mm / 13"
Depth: 180mm / 7"

Grosvenor Single Wall Light with Storm Glass 721G. Made of Solid Brass. Shown in AB (Distressed Finish).

Wattage: 1 x 60w SES
Height: 550mm / 21.7"
Width: 120mm / 4.7"
Depth: 190mm / 7.5"

Finishes
available
for this
Collection



N



ANT



AB



PBUL



PB

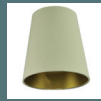
Optional
available
shades



D6 Black



D6(G) Gold



D6(G) Ivory



D6(G) Black



D6 White



Grosvenor Bathroom Wall Lights



AB
SHOWN

Grosvenor Bathroom Wall Light 721B.

Made of Solid Brass. Shown in AB (Distressed Finish). NOTE: shade D6 gold available separately.

Wattage: 1 x 25w G9
Height: 420mm / 16.5"
Width: 110mm / 4.3"
Depth: 190mm / 7.5"



N
SHOWN

Grosvenor Bathroom Twin Wall Light 721BT.

Made of Solid Brass. Shown in N (Polished Nickel). NOTE: shade D6 White available separately.

Wattage: 2 x 25w G9
Height: 420mm / 16.5"
Width: 280mm / 11"
Depth: 145mm / 5.7"



PB
SHOWN

Grosvenor Bathroom Wall Light with Storm Glass 721BG.

Made of Solid Brass. Shown in PB (Polished Lacquered Brass).

Wattage: 1 x 25w G9
Height: 550mm / 21.7"
Width: 120mm / 4.7"
Depth: 190mm / 7.5"



N
SHOWN

Grosvenor Bathroom Twin Wall Light with Storm Glass 721BTG.

Made of Solid Brass. Shown in N (Polished Nickel).

Wattage: 2 x 25w G9
Height: 550mm / 21.7"
Width: 330mm / 13"
Depth: 180mm / 7"



Georgian Wall Sconces



PB
SHOWN



N
SHOWN

Georgian Single Wall Sconce 824. Made of Cast Brass. Shown in PB (Polished Lacquered Brass). IP44 bathroom use available.

Wattage: 1 x 40w SES
Height: 360mm / 14.2"
Width: 100mm / 3.9"
Depth: 140mm / 5.5"

Georgian Twin Wall Sconce 825. Made of Cast Brass. Shown in N (Polished Nickel). IP44 bathroom use available.

Wattage: 2 x 40w SES
Height: 360mm / 14.2"
Width: 210mm / 8.3"
Depth: 110mm / 4.3"



AB
SHOWN



PB
SHOWN

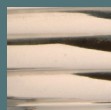
Diane Single Wall Light 826. Made of Solid Brass. Shown in AB (Distressed Finish). NOTE: shade C1 ivory available seperately. IP44 bathroom use available.

Wattage: 1 x 40w SES
Height: 250mm / 9.8"
Width: 115mm / 4.5"
Depth: 155mm / 6.1"

Diane Twin Wall Light 827. Made of Solid Brass. Shown in PB (Polished Lacquered Brass). IP44 bathroom use available.

Wattage: 2 x 40w SES
Height: 250mm / 9.8"
Width: 215mm / 8.5"
Depth: 110mm / 4.3"

Finishes
Available
for this
Collection



N



ANT



AB



PBUL



PB

Optional
Available
Shades



CY6 Black

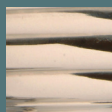


CY6 Ivory



CY6 White

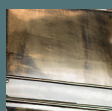
Finishes
Available
for this
Collection



N



ANT



AB



PBUL



PB

Optional
Available
Shades



CY6 Black



CY6 Ivory



CY6 White



Georgian Wall Sconces



AB
SHOWN

Valerie Single Wall Sconce 828. *Made of Solid Brass. Shown in AB (Distressed Finish).*

Wattage: 1 x 40w SES
Height: 350mm / 13.8"
Width: 115mm / 4.5"
Depth: 155mm / 6.1"



PB
SHOWN

Valerie Twin Wall Sconce 829. *Made of Solid Brass. Shown in PB (Polished Lacquered Brass).*

Wattage: 2 x 40w SES
Height: 350mm / 13.8"
Width: 205mm / 8"
Depth: 140mm / 5.5"



N
SHOWN

Opera Single Wall Sconce 822. *Made of Solid Brass. Shown in N (Polished Nickel).*

Wattage: 1 x 40w SES
Height: 270mm / 10.6"
Width: 140mm / 5.5"
Depth: 130mm / 5.1"



AB
SHOWN

Opera Twin Wall Sconce 823. *Made of Solid Brass. Shown in AB (Distressed Finish).*

Wattage: 2 x 40w SES
Height: 270mm / 10.6"
Width: 210mm / 8.3"
Depth: 100mm / 3.9"



N
SHOWN



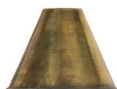
AB
SHOWN

E'toile Single Wall Light 820. *Made of Solid Brass. Shown in N (Polished Nickel).*

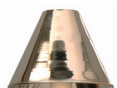
Wattage: 1 x 40w SES
Height: 330mm / 13"
Width: 160mm / 6.3"
Depth: 135mm / 5.3"

E'toile Twin Wall Light 821. *Made of Solid Brass. NOTE: shade CY6 ivory available seperately. Shown in AB (Distressed Finish).*

Wattage: 2 x 40w SES
Height: 330mm / 13"
Width: 190mm / 7.5"
Depth: 120mm / 4.7"



CB55 (Shown In Ab)



(N) CB55 (Polished Nickel)

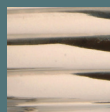
Eton Wall Light 726. *Made of Solid Brass. NOTE: shade N CB55 available seperately. Shown in N (Polished Nickel).*

Wattage: 1 x 40w SES
Height: 250mm / 9.8"
Width: 110mm / 4.3"
Depth: 130mm / 5.1"



N
SHOWN

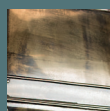
Finishes
Available
for this
Collection



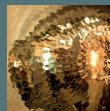
N



ANT



AB



PBUL



PB

Optional
Available
Shades



CY6 Black



CY6 Ivory



CY6 White

Finishes
available
for this
Collection



ANT



AB

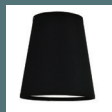


PBUL



PB

Optional
available
shades



D6 Black



D6(G) Gold



D6(G) Ivory



D6(G) Black



D6 White



Edwardian Wall Sconces



AB
SHOWN

Carlton Single Wall Light 710. Cast Brass
Replica Edwardian Wall Light. (Shown with optional
D6G(B) shade). Shown in AB (Distressed Finish).

Wattage: 1 x 40w SES
Height: 290mm / 11.4" with Shade
Width: 80mm / 3.1"
Depth: 190mm / 7.5" with Shade



AB
SHOWN

Hampton Twin Wall Sconce 831. Made of
Solid Brass. Shown in AB (Distressed Finish).

Wattage: 2 x 40w SES
Height: 470mm / 18.5"
Width: 250mm / 9.8"
Depth: 115mm / 4.5"



PB
SHOWN

Carlton Twin Wall Light 710T. Cast Brass
Replica Edwardian Wall Light. (Shown with optional
D6G(G) shade). Shown in PB (Polished
Lacquered Brass).

Wattage: 2 x 40w SES
Height: 290mm / 11.4" with Shade
Width: 270mm / 10.6"
Depth: 170mm / 6.7" with Shade



AB
SHOWN

Hampton Single Wall Sconce 830. Made of
Solid Brass. Shown in AB (Distressed Finish).

Wattage: 1 x 40w SES
Height: 470mm / 18.5"
Width: 100mm / 3.9"
Depth: 145mm / 5.7"



Optional Card Shades



D6(G) Gold



D6(G) Black



D6(G) Ivory



D6 White



D6 Black



CY6 Black



CY6 Ivory



CY6 White



C6 Black



C6 Ivory



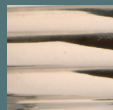
C6 Red

Model	D6(G) & D6
Height:	170mm
Width:	155mm
Depth:	155mm
Fitment	Clip for Golf Ball

CY6
160mm
100mm
100mm
Clip for Golf Ball

C6
110mm
150mm
150mm
Clip for Golf Ball

Finishes
Available
for this
Collection



N



ANT



AB



PBUL



PB



La Luna Wall Lights



PB
SHOWN



AB
SHOWN



Small La Luna Wall Sconce 846. Made of Solid Brass. Shown in PB (Polished Lacquered Brass).

Wattage: 1 x 60w SES
Height: 330mm / 13"
Width: 220mm / 8.75"
Depth: 170mm / 6.6"



Large La Luna Wall Light 846A. Made of Solid Brass. Shown in AB (Distressed Finish).

Wattage: 1 x 60w SES
Height: 440mm / 17.30"
Width: 350mm / 13.75"
Depth: 170mm / 6.6"



Oyster Wall Lights



PB
SHOWN



N
SHOWN



Large Oyster Wall Light 848A. Made of Solid Brass.
Shown in PB (Polished Lacquered Brass).

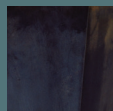
Wattage: 1 x 60w SES
Height: 360mm / 14.25"
Width: 360mm / 14.25"
Depth: 160mm / 6.3"



Small Oyster Wall Light 848. Made of Solid Brass.
Shown in N (Polished Nickel).

Wattage: 1 x 60w SES
Height: 330mm / 13"
Width: 330mm / 13"
Depth: 160mm / 6.3"

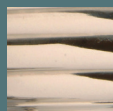
Finishes
Available
for this
Collection



BZ



C



N



ANT



AB



PBUL



PB



Gatsby Deco Wall Lights



N
SHOWN



Large Gatsby Wall Light
850A. Made of Solid Brass.
Shown in N (Polished Nickel).

Wattage: 3 x 40w SES
Height: 650mm / 25.6"
Width: 100mm / 3.9"
Depth: 110mm / 4.3"



AB
SHOWN



Medium Gatsby Wall Light
850B. Made of Solid Brass.
Shown in AB (Distressed Finish).

Wattage: 2 x 40w SES
Height: 490mm / 19.3"
Width: 100mm / 3.9"
Depth: 110mm / 4.3"



C
SHOWN



Small Gatsby Wall
Light 850. Made of Solid
Brass. Shown in C (Copper
Unlacquered).

Wattage: 1 x 60w SES
Height: 340mm / 13.4"
Width: 100mm / 3.9"
Depth: 110mm / 4.3"



Blenheim Picture Lights



PB
SHOWN



Blenheim Tube Picture Light BL25.
Made of Solid Brass. Shown in PB (Polished
Lacquered Brass).

Wattage: 4 x 25w SES
Height: 175mm / 21.7"
Width: 640mm / 21.7"
Depth: 250mm / 21.7"
Arm Spacing: 300mm / 21.7"



PBUL
SHOWN



13" Blenheim Tube Picture Light BL13. Made of Solid Brass. Shown in PBUL
(Unlacquered Natural Finish).

Wattage: 4 x 25w SES
Height: 175mm / 21.7"
Width: 340mm / 13.4"
Depth: 250mm / 9.8"



C
SHOWN



13" Blenheim Trough Picture Light BT13. Made of Solid Brass. Shown in C
(Copper Unlacquered).

Wattage: 2 x 25w SES
Height: 205mm / 8.1"
Width: 335mm / 13.2"
Depth: 310mm / 12.2"



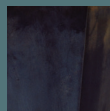
N
SHOWN



24" Blenheim Trough Picture Light BT24. Made of Solid Brass. Shown in N
(Polished Nickel).

Wattage: 4 x 25w SES
Height: 205mm / 8.1"
Width: 615mm / 24.2"
Depth: 310mm / 12.2"
Arm Spacing: 300mm / 11.8"

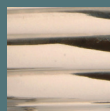
Finishes
Available
for this
Collection



BZ



C



N



ANT



AB



PBUL

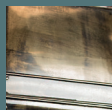


PB

Finishes
Available
for this
Collection



ANT



AB



PBUL



PB



Spot Lights

PB
SHOWN



Classic 3 x Brass Victorian Style Spotlights 815B3. *Made of Solid Brass. Shown in PB (Polished Lacquered Brass).*

Wattage: 3 x 35w GU10

Height: 170mm / 6.7"

Width: 630mm / 24.8"

Depth: 240mm / 9.4"

PB
SHOWN



AB
SHOWN



3 x Brass Victorian Style Spotlights 815C3. *Made of Solid Brass. Shown in PB (Polished Lacquered Brass).*

Wattage: 3 x 35w GU10

Height: 170mm / 6.7"

Width: 360mm / 14.2"

Depth: 360mm / 14.2"



Classic Brass Spotlights 815. *Made of Solid Brass. Shown in AB (Distressed Finish).*

Wattage: 1 x 35w GU10

Height: 130mm / 5.1"

Width: 100mm / 3.9"

Depth: 100mm / 3.9"



—VINTAGE & INDUSTRIAL—
LIMEHOUSE
1900
—LIGHTING—



LB1



Specifications

Height: 185mm / 7.25"
Width: 30mm / 1.2"
Depth: 30mm / 1.2"
Lamp Holder: ES
Wattage: 30w
Voltage: (EU Spec) 220-240v /
(US Spec) 110V

LB2



Specifications

Height: 130mm / 5.1"
Width: 60mm / 2.4"
Depth: 60mm / 2.4"
Lamp Holder: ES
Wattage: 40w
Voltage: (EU Spec) 220-240v /
(US Spec) 110V

LB3



Specifications

Height: 130mm / 5.1"
Width: 90mm / 3.6"
Depth: 90mm / 3.6"
Lamp Holder: ES
Wattage: 30w
Voltage: (EU Spec) 220-240v /
(US Spec) 110V

LB4



Specifications

Height: 185mm / 7.25"
Width: 30mm / 1.2"
Depth: 30mm / 1.2"
Lamp Holder: GU10
Wattage: 4-5w
Voltage: (EU Spec) 220-240v /
(US Spec) 110V

CEILING AND WALL MOUNTING PLATES

1900-P5 (Shown in N)



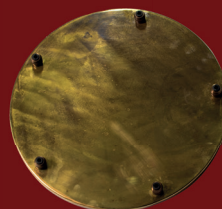
1900-P3 (Shown in AB)



1900-C3 (Shown in N)



1900-C5 (Shown in AB)



1900-100 (Shown in C)

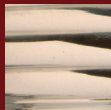


1900-130 (Shown in N)



Model	Height	Width	Depth	Fixing Method
1900-P5	40mm / 1.6"	105mm / 4.2"	910mm / 35.75"	2 x side tapped fixing plates multi mount
1900-P3	40mm / 1.6"	105mm / 4.2"	605mm / 23.5"	Side tapped fixing plates multi mount
1900-C5	40mm / 1.6"	330mm / 13"	330mm / 13"	Side tapped fixing strap multi mount
1900-C3	40mm / 1.6"	220mm / 8.6"	220mm / 8.6"	Side tapped fixing strap multi mount
1900-130	55mm / 2.3"	130mm / 5.2"	130mm / 5.2"	Side tapped fixing strap multi mount
1900-100	65mm / 2.6"	108mm / 4.25"	108mm / 4.25"	2 screw holes

Finishes
Available
for this
Collection



N



AB

Included
Bulb



LB3



EDISON COLLECTION



AB
SHOWN

Small Edison Pendant 1900-1-P.
*Made of Solid Brass. Shown in AB
(Distressed Finish).*

Wattage: 1 x 40w SES

Height: Min 310mm / 12.2"
Max 1310mm / 51.6"

Width: 203mm / 8"

Depth: 203mm / 8"



N
SHOWN



Small Edison 3 light pendant 1900-P3. *Made of Solid Brass. Shown in N (Polished Nickel).*

Wattage: 1 x 40w ES

Height: Min 310mm / 12.2"
Max 1310mm / 51.6"

Width: 730mm / 28.7"

Depth: 203mm / 8"



AB
SHOWN



Small Edison 5 light pendant 1900-1-P5. *Made of Solid Brass. Shown in AB (Distressed Finish).*

Wattage: 1 x 40w ES

Height: Min 310mm / 12.2"
Max 1310mm / 51.6"

Width: 1060mm / 41.7"

Depth: 203mm / 8"



N
SHOWN



Small Edison 3 light cluster 1900-1-C3. *Made of Solid Brass. Shown in N (Polished Nickel).*

Wattage: 3 x 40w ES

Height: Min 310mm / 12.2"
Max 1310mm / 51.6"

Width: 370mm / 14.6"

Depth: 370mm / 14.6"



AB
SHOWN



Small Edison 5 light cluster 1900-1-C5. *Made of Solid Brass. Shown in AB (Distressed Finish).*

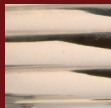
Wattage: 5 x 40w ES

Height: Min 310mm / 12.2"
Max 1310mm / 51.6"

Width: 500mm / 19.7"

Depth: 500mm / 19.7"

Finishes
Available
for this
Collection



N



AB

Included
Bulb



LB3



N
SHOWN

Small Edison flush ceiling light pendant
1900-1-F. *Made of Solid Brass. Shown in N*
(Polished Nickel).

Wattage: 1 x 40w ES
Height: 290mm / 11.4"
Width: 203mm / 8"
Depth: 203mm / 8"



N
SHOWN



Small Edison single wall light 1900-1-W. *Made of Solid Brass. Shown in N (Polished Nickel).*

Wattage: 1 x 40w ES

Height: 260mm / 10.2"

Width: 203mm / 8"

Depth: 285mm / 11.2"



AB
SHOWN



Small Edison single adjustable height wall light 1900-1-WAD. *Made of Solid Brass. Shown in AB (Distressed Finish).*

Wattage: 1 x 40w ES

Height: Min 300mm / 11.8"
Max 1150mm / 45.3"

Width: 203mm / 8"

Depth: 260mm / 10.2"



AB
SHOWN



Large Edison flush ceiling light pendant 1900-2-F. *Made of Solid Brass. Shown in AB (Distressed Finish).*

Wattage: 1 x 40w ES

Height: 290mm / 11.4"

Width: 355mm / 14"

Depth: 355mm / 14"



N
SHOWN



Large Edison single pendant 1900-2-P. *Made of Solid Brass. Shown in N (Polished Nickel).*

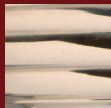
Wattage: 1 x 40w ES

Height: 310mm / 12.2"

Width: 355mm / 14"

Depth: 355mm / 14"

Finishes
Available
for this
Collection



N



AB

Included
Bulb



LB3



AB
SHOWN

Large Edison 2 light pendant 1900-2-P2.
*Made of Solid Brass. Shown in AB
(Distressed Finish).*

Wattage: 2 x 40w ES
Height: Min 280mm / 11"
Max 1180mm / 46.5"
Width: 900mm / 35.4"
Depth: 355mm / 14"



Large Edison 3 light pendant
1900-2-P3. *Made of Solid Brass. Shown in N (Polished Nickle).*

Wattage: 3 x 40w ES

Height: Min 280mm / 11"
Max 1180mm / 46.5"

Width: 1080mm / 42.5"

Depth: 355mm / 14"



Large Edison Wall Light pendant 1900-2-W. *Made of Solid Brass. Shown in AB (Distressed Finish).*

Wattage: 1 x 40w ES

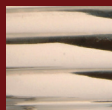
Height: 270mm / 10.6"

Width: 355mm / 14"

Depth: 400mm / 15.7"



Finishes
Available
for this
Collection



N



AB

Included
Bulb



LB2



MARCONI COLLECTION



N
SHOWN

Marconi single pendant 1900-3-P. *Made of Solid Brass. Shown in N (Polished Nickel).*

Wattage: 1 x 40w ES

Height: Min 370mm / 14.6"
Max 1400mm / 55.1"

Width: 130mm / 5.1"

Depth: 130mm / 5.1"



N
SHOWN

The Marconi Flexi Wall multi adjustable Light 1900-3-FL. *Made of Solid Brass. Shown in N (Polished Nickel).*

Wattage: 1 x 40w ES

Height: Min: 140mm / 5.5"
Max: 480mm / 18.9"

Width: Min: 140mm / 5.5"
Max: 480mm / 18.9"

Depth: Min: 220mm / 8.7"
Max: 520mm / 20.5"





N
SHOWN

Marconi 3 light pendant 1900-3-P3. *Made of Solid Brass. Shown in N (Polished Nickle).*

Wattage: 3 x 40w ES

Height: Min 370mm / 14.6"
Max 1400mm / 55.1"

Width: 310mm / 12.2"

Depth: 310mm / 12.2"



AB
SHOWN

Marconi 5 light pendant 1900-3-P5. *Made of Solid Brass. Shown in AB (Distressed Finish).*

Wattage: 5 x 40w ES

Height: Min 370mm / 14.6"
Max 1400mm / 55.1"

Width: 440mm / 17.3"

Depth: 440mm / 17.3"



N
SHOWN

Marconi 3 light cluster 1900-3-C3. *Made of Solid Brass. Shown in N (Polished Nickle).*

Wattage: 3 x 40w ES

Height: Min 370mm / 14.6"
Max 1400mm / 55.1"

Width: 310mm / 12.2"

Depth: 310mm / 12.2"



AB
SHOWN

Marconi 5 light cluster 1900-3-C5. *Made of Solid Brass. Shown in AB (Distressed Finish).*

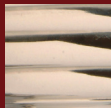
Wattage: 5 x 40w ES

Height: Min 370mm / 14.6"
Max 1400mm / 55.1"

Width: 440mm / 17.3"

Depth: 440mm / 17.3"

Finishes
Available
for this
Collection



N



AB

Included
Bulb



LB2



N
SHOWN

Marconi Flush Ceiling Light 1900-3-F.
*Made of Solid Brass. Shown in N (Polished
Nickle).*

Wattage: 1 x 40w ES
Height: 250mm / 9.8"
Width: 130mm / 5.1"
Depth: 130mm / 5.1"



AB
SHOWN

Marconi Wall Light 1900-3-W. *Made of Solid Brass. Shown in AB (Distressed Finish).*

Wattage: 1 x 40w ES

Height: 270mm / 10.6"

Width: 130mm / 5.1"

Depth: 160mm / 6.3"



N
SHOWN

Marconi Adjustable Wall/Ceiling Light 1900-3-AW. *Made of Solid Brass. Shown in N (Polished Nickel).*

Wattage: 1 x 40w ES

Height: Min 270mm / 10.6"

Max 340mm / 13.4"

Width: 130mm / 5.1"

Depth: Min 170mm / 6.7"

Max 340mm / 13.4"



AB
SHOWN

Marconi Adjustable Drop Wall Light. 1900-3-WAD. *Made of Solid Brass. Shown in AB (Distressed Finish).*

Wattage: 1 x 40w ES

Height: Min 300mm / 11.8"

Max 1100mm / 43.3"

Width: 130mm / 5.1"

Depth: 240mm / 9.4"



N
SHOWN

Twin Marconi Wall Light 1900-3-W2. *Made of Solid Brass. Shown in N (Polished Nickel).*

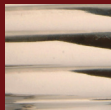
Wattage: 1 x 40w ES

Height: 425mm / 16.7"

Width: 130mm / 5.1"

Depth: 140mm / 9.4"

Finishes
Available
for this
Collection

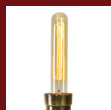


N



AB

Included
Bulb



LB1



ALEXANDER COLLECTION



N
SHOWN

Alexander 3 light pendant 1900-4-P3.
*Made of Solid Brass. Shown in N (Polished
Nickel).*

Wattage: 3 x 40w ES
Height: Min 400mm / 15.7"
Max 1400mm / 55.1"
Width: 610mm / 24"
Depth: 120mm / 4.7"



AB
SHOWN



Alexander 5 light pendant 1900-4-P5. *Made of Solid Brass. Shown in AB (Distressed Finish).*

Wattage: 5 x 40w ES

Height: Min 400mm / 15.7"
Max 1400mm / 55.1"

Width: 920mm / 36.2"

Depth: 120mm / 4.7"



N
SHOWN



Alexander 5 Light Cluster 1900-4-C5. *Made of Solid Brass. Shown in N (Polished Nickel).*

Wattage: 5 x 40w ES

Height: Min 400mm / 15.7"
Max 1400mm / 55.1"

Width: 340mm / 13.4"

Depth: 340mm / 13.4"



AB
SHOWN



Alexander Flush Ceiling Light 1900-4-F. *Made of Solid Brass. Shown in AB (Distressed Finish).*

Wattage: 1 x 40w ES

Height: 350mm / 13.8"

Width: 115mm / 4.5"

Depth: 115mm / 4.5"



AB
SHOWN



Alexander 3 Light Cluster 1900-4-C3. *Made of Solid Brass. Shown in AB (Distressed Finish).*

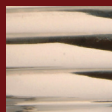
Wattage: 5 x 40w ES

Height: Min 400mm / 15.7"
Max 1400mm / 55.1"

Width: 220mm / 8.8"

Depth: 340mm / 13.4"

Finishes
Available
for this
Collection



N



AB

Included
Bulb



LB1



AB
SHOWN



AB
SHOWN



Alexander Adjustable Drop Wall Light
1900-4-WAD. Made of Solid Brass. Shown
in AB (Distressed Finish).

Wattage: 1 x 40w ES
Height: Min 400mm / 15.7"
Max 1200mm / 47.2"
Width: 100mm / 3.9"
Depth: 210mm / 8.3"



Alexander single pendant 1900-4-P. Made
of Solid Brass. Shown in AB (Distressed Finish).

Wattage: 1 x 40w SES
Height: Min 400mm / 15.7"
Max 1400mm / 55.1"
Width: 110mm / 4.3"
Depth: 110mm / 4.3"



N
SHOWN

Alexander Adjustable Wall/Ceiling Light 1900-4-WA. *Made of Solid Brass. Shown in N (Polished Nickel).*

Wattage: 1 x 40w ES

Height: Min 110mm / 4.3"
Max 270mm / 10.6"

Width: 110mm / 4.3"

Depth: Min 155mm / 6.1"
Max 450mm / 17.7"



AB
SHOWN

Alexander Double Wall/Ceiling Light 1900-4-W2. *Made of Solid Brass. Shown in AB (Distressed Finish).*

Wattage: 2 x 40w ES

Height: 625mm / 24.6"

Width: 110mm / 4.3"

Depth: 115mm / 4.5"



N
SHOWN

The Alexander Flexi Wall multi adjustable Light 1900-4-FL. *Made of Solid Brass. Shown in N (Polished Nickel).*

Wattage: 1 x 40w ES

Height: Min 170mm / 6.7"
Max 500mm / 19.7"

Width: Min 110mm / 4.3"
Max 500mm / 19.7"

Depth: Min 170mm / 6.7"
Max 520mm / 20.5"



N
SHOWN

Alexander Wall Light 1900-4-W. *Made of Solid Brass. Shown in N (Polished Nickel).*

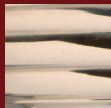
Wattage: 1 x 40w ES

Height: 355mm / 14"

Width: 115mm / 4.5"

Depth: 145mm / 5.7"

Finishes
Available
for this
Collection



N



AB

Included
Bulb



LB3



TOMMY COLLECTION



AB
SHOWN

**The TommyFlexi Wall multi adjustable
Light 1900-5-FL.** *Made of Solid Brass.
Shown in AB (Distressed Finish).*

Wattage: 1 x 40w ES

Height: Min 120mm / 4.7"
Max 420mm / 16.5"

Width: Min 110mm / 4.3"
Max 420mm / 16.5"

Depth: Min 190mm / 7.5"
Max 450mm / 17.7"



N
SHOWN

Tommy Single Pendant 1900-5-P. *Made of Solid Brass. Shown in N (Polished Nickel).*

Wattage: 2 x 40w ES

Height: Min 290mm / 11.4"
Max 1280mm / 50.4"

Width: 130mm / 5.1"

Depth: 130mm / 5.1"



AB
SHOWN

Tommy 3 Light Pendant 1900-5-P3. *Made of Solid Brass. Shown in AB (Distressed Finish).*

Wattage: 3 x 40w ES

Height: Min 160mm / 6.3"
Max 1240mm / 48.8"

Width: 600mm / 23.6"

Depth: 130mm / 5.1"



N
SHOWN

Tommy 5 Light Pendant 1900-5-P5. *Made of Solid Brass. Shown in N (Polished Nickel).*

Wattage: 5 x 40w ES

Height: Min 160mm / 6.3"
Max 1240mm / 48.8"

Width: 930mm / 36.6"

Depth: 130mm / 5.1"



AB
SHOWN

Tommy 3 Light Cluster 1900-5-C3. *Made of Solid Brass. Shown in AB (Distressed Finish).*

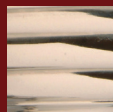
Wattage: 3 x 40w ES

Height: Min 160mm / 6.3"
Max 1240mm / 48.8"

Width: 220mm / 8.7"

Depth: 220mm / 8.7"

Finishes
Available
for this
Collection



N



AB

Included
Bulb



LB3



Tommy 5 Light Cluster 1900-5-C5. *Made of Solid Brass. Shown in N (Polished Nickle).*

Wattage: 5 x 40w ES
Height: Min 160mm / 6.3"
Max 1240mm / 48.8"
Width: 350mm / 13.8"
Depth: 350mm / 13.8"



AB
SHOWN



N
SHOWN

Twin Tommy Wall Light 1900-5-W2. *Made of Solid Brass. Shown in AB (Distressed Finish).*

Wattage: 1 x 40w ES
Height: 305mm / 12"
Width: 130mm / 5.1"
Depth: 150mm / 5.9"

Tommy Flush Ceiling Light 1900-5-F. *Made of Solid Brass. Shown in N (Polished Nickle).*

Wattage: 1 x 40w ES
Height: 210mm / 8.3"
Width: 130mm / 5.1"
Depth: 130mm / 5.1"



AB
SHOWN



N
SHOWN



AB
SHOWN

Tommy fixed Wall Light 1900-5-W. *Made of Solid Brass. Shown in AB (Distressed Finish).*

Wattage: 1 x 40w ES
Height: 230mm / 9.1"
Width: 130mm / 5.1"
Depth: 180mm / 7.1"

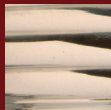
Tommy Adjustable Wall/Ceiling Light 1900-5-AW. *Made of Solid Brass. Shown in N (Polished Nickle).*

Wattage: 1 x 40w ES
Height: 270mm / 10.6"
Width: 130mm / 5.1"
Depth: Min 170mm / 6.7" -
Max 310mm / 12.2"

Tommy Adjustable Drop Wall Light 1900-5-WAD. *Made of Solid Brass. Shown in AB (Distressed Finish).*

Wattage: 1 x 40w ES
Height: Min 270mm / 10.6"
Max 1270mm / 50"
Width: 130mm / 5.1"
Depth: 235mm / 9.3"

Finishes
Available
for this
Collection



N



AB

Included
Bulb



LB4



MAP ROOM COLLECTION



N
SHOWN

Map Room Single Pendant 1900-6-P.
*Made of Solid Brass. Shown in N (Polished
Nickle).*

Wattage: 1 x 35w GU10
Height: Min 240mm / 9.4"
Max 1260mm / 49.6"
Width: 210mm / 8.3"
Depth: 220mm / 8.7"



AB
SHOWN

Map Room 3 Light Pendant 1900-6-P3. *Made of Solid Brass. Shown in AB (Distressed Finish).*

Wattage: 3 x 35w GU10

Height: Min 240mm / 9.4"
Max 1260mm / 49.6"

Width: 740mm / 29.1"

Depth: 220mm / 8.7"



N
SHOWN

Map Room 5 Light Pendant 1900-6-P5. *Made of Solid Brass. Shown in N (Polished Nickel).*

Wattage: 5 x 35w GU10

Height: Min 240mm / 9.4"
Max 1260mm / 49.6"

Width: 1040mm / 40.9"

Depth: 220mm / 8.7"



AB
SHOWN

Map Room 3 Light Cluster 1900-6-C3. *Made of Solid Brass. Shown in AB (Distressed Finish).*

Wattage: 3 x 35w GU10

Height: Min 240mm / 9.4"
Max 1260mm / 49.6"

Width: 370mm / 14.6"

Depth: 370mm / 14.6"



N
SHOWN

Map Room 5 Light Cluster 1900-6-C5. *Made of Solid Brass. Shown in N (Polished Nickel).*

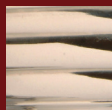
Wattage: 5 x 35w GU10

Height: Min 240mm / 9.4"
Max 1260mm / 49.6"

Width: 500mm / 19.7"

Depth: 500mm / 19.7"

Finishes
Available
for this
Collection



N



AB

Included
Bulb



LB4



AB
SHOWN



Small Map Wall Light 1900-6-W.S. *Made of Solid Brass. Shown in AB (Distressed Finish).*

Wattage: 3 x 35w GU10

Height: 140mm / 5.5"

Width: 130mm / 5.1"

Depth: 170mm / 6.7"



N
SHOWN



Large Map Room Wall Light 1900-6-WL. *Made of Solid Brass. Shown in N (Polished Nickle).*

Wattage: 5 x 35w GU10

Height: 240mm / 9.4"

Width: 210mm / 8.3"

Depth: 270mm / 10.6"



AB
SHOWN



Map Room Adjustable Drop Wall Light 1900-6-WAD. *Made of Solid Brass. Shown in AB (Distressed Finish).*

Wattage: 1 x 35w GU10

Height: Min 270mm / 10.6"

Max 1270mm / 50"

Width: 210mm / 8.3"

Depth: 300mm / 11.8"



N
SHOWN



Map Room Single Adjustable Wall Light 1900-6-ASW. *Made of Solid Brass. Shown in N (Polished Nickle).*

Wattage: 1 x 35w GU10

Height: Min 140mm / 5.5"

Max 370mm / 14.6"

Width: 130mm / 5.1"

Depth: Min 220mm / 8.7"

Max 350mm / 13.8"



AB
SHOWN

Map Room Double adjustable Wall Light 1900-6-ADW. *Made of Solid Brass. Shown in AB (Distressed Finish).*

Wattage: 1 x 35w GU10

Height: Min 125mm / 4.9"
Max 500mm / 19.7"

Width: 130mm / 5.1"

Depth: Min 310mm / 12.2"
Max 540mm / 21.3"



AB
SHOWN

Map Room adjustable Wall/Ceiling Light 1900-6-AW. *Made of Solid Brass. Shown in AB (Distressed Finish).*

Wattage: 1 x 35w GU10

Height: 170mm / 6.7"

Width: 130mm / 5.1"

Depth: 230mm / 9.1"



N
SHOWN

Map Room Flush Ceiling Light 1900-6-F. *Made of Solid Brass. Shown in N (Polished Nickel).*

Wattage: 1 x 35w GU10

Height: 255mm / 10"

Width: 210mm / 8.3"

Depth: 210mm / 8.3"



N
SHOWN

The Map Room Flexi Wall multi adjustable Light 1900-6-FL. *Made of Solid Brass. Shown in N (Polished Nickel).*

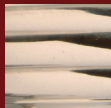
Wattage: 1 x 35w GU10

Height: Min 130mm / 5.1"
Max 360mm / 14.2"

Width: Min 130mm / 5.1"
Max 360mm / 14.2"

Depth: Min 180mm / 7.1"
Max 390mm / 15.4"

Finishes
Available
for this
Collection

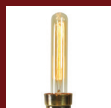


N



AB

Included
Bulb



LB1

1900-7-WL

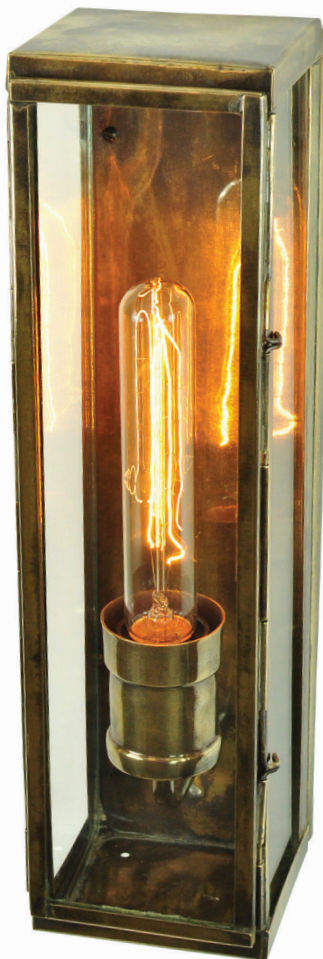


LB2

1900-7-WS



ENGINEER BOX LANTERNS



AB
SHOWN

Large Engineer Wall Lantern 1900-7WL.
*Made of Solid Brass. Shown in AB
(Distressed Finish).*

Wattage: 1 x 40w ES
Height: 385mm / 15.2"
Width: 100mm / 3.9"
Depth: 120mm / 4.7"



N
SHOWN

Small Engineer Wall Lantern 1900-7-WS. *Made of Solid Brass. Shown in N (Polished Nickle).*

Wattage: 1 x 40w ES

Height: 285mm / 11.2"

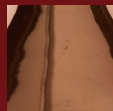
Width: 100mm / 3.9"

Depth: 120mm / 4.7"

Finishes
Available
for this
Collection



AB



C

Included
Bulb



LB2



CELLAR COLLECTION



**AB
SHOWN**

The Cellar Single Pendant 1900-8-P.
*Made of Solid Brass. Shown in AB
(Distressed Finish).*

Wattage: 1 x 40w ES
Height: Min 240mm / 9.4"
Max 1300mm / 51.2"
Width: 110mm / 4.3"
Depth: 110mm / 4.3"



AB
SHOWN

The Cellar 3 Light Pendant 1900-8-P3. *Made of Solid Brass. Shown in AB (Distressed Finish).*

Wattage: 3 x 40w ES

Height: Min 240mm / 9.4"
Max 1300mm / 51.2"

Width: 640mm / 25.2"

Depth: 110mm / 4.3"



C
SHOWN

The Cellar 5 Light Pendant 1900-8-P5. *Made of Solid Brass. Shown in C (Copper Unlacquered).*

Wattage: 5 x 40w ES

Height: Min 240mm / 9.4"
Max 1300mm / 51.2"

Width: 910mm / 35.8"

Depth: 110mm / 4.3"



C
SHOWN

The Cellar 6 Light Cluster 1900-8-C6. *Made of Solid Brass. Shown in C (Copper Unlacquered).*

Wattage: 6 x 40w ES

Height: Min 240mm / 9.43"
Max 1300mm / 51.2"

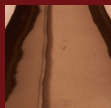
Width: 300mm / 11.8"

Depth: 300mm / 11.8"

Finishes
Available
for this
Collection



AB



C

Included
Bulb



LB2



CELLAR COLLECTION



AB
SHOWN

The Cellar Angled Wall Light 1900-8-AW.
Made of Solid Brass. Shown in AB (Distressed Finish).

Wattage: 1 x 40w ES
Height: 245mm / 9.6"
Width: 110mm / 4.3"
Depth: 210mm / 8.3"



C
SHOWN



The Cellar Wall Light 1900-8-W. *Made of Solid Brass. Shown in C (Copper Unlacquered).*

Wattage: 1 x 40w ES

Height: 245mm / 9.6"

Width: 110mm / 4.3"

Depth: 210mm / 8.3"



AB
SHOWN



The Cellar Flush Light 1900-8-F. *Made of Solid Brass. Shown in AB (Distressed Finish).*

Wattage: 1 x 40w ES

Height: 220mm / 8.7"

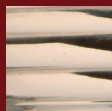
Width: 120mm / 4.7"

Depth: 120mm / 4.7"

Finishes
Available
for this
Collection



C

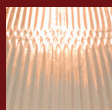


N



AB

Glass
Finish



CLEAR
PRISMATIC



PRISMATIC COLLECTION



C
SHOWN

The Prismatic Railroad Single Pendant
1900-21-P. Made of Solid Brass. Shown in C
(Copper Unlacquered).

Wattage: 1 x 60w ES

Height: Min 330mm / 13"
Max 1300mm / 51.2"

Width: 285mm / 11.2"

Depth: 285mm / 11.2"



C
SHOWN



The Prismatic Railroad Flush 1900-21-F. *Made of Solid Brass. Shown in C (Copper Unlacquered).*

Wattage: 1 x 40w ES
Height: 355mm / 14"
Width: 115mm / 4.5"
Depth: 145mm / 5.7"



C
SHOWN



The Prismatic Cone Single Pendant 1900-22-P. *Made of Solid Brass. Shown in C (Copper Unlacquered).*

Wattage: 1 x 40w ES
Height: Min 270mm / 10.6"
 Max 1300mm / 51.2"
Width: 180mm / 7.1"
Depth: 180mm / 7.1"



AB
SHOWN



The Prismatic Cone Wall Light 1900-22-W. *Made of Solid Brass. Shown in AB (Distressed Finish).*

Wattage: 1 x 40w ES
Height: 300mm / 11.8"
Width: 180mm / 7.1"
Depth: 325mm / 12.8"



C
SHOWN



The Prismatic Cone Flush Light 1900-22-F. *Made of Solid Brass. Shown in C (Copper Unlacquered).*

Wattage: 1 x 40w ES
Height: 230mm / 9.1"
Width: 180mm / 7.1"
Depth: 180mm / 7.1"



Terms & Conditions

DEFINITIONS

- 1.1 “The company” - means The Limehouse Lamp Company Limited
- 1.2 “The customer” - means the customer to the company, whether an individual, partnership, a company or their servants or agents.
- 1.3 “The Contract” - means any contract for sale of goods by the company to the customer.
- 1.4 “The Goods” - means any goods which the Company supplies in accordance with these conditions including parts and components of or materials incorporated in them.

EXISTENCE OF CONTRACT

- 2.1 These conditions shall be incorporated in the contract to the exclusion of any terms or conditions stipulated or referred to by the Customer.
- 2.2 The conditions printed on the price list, from time to time, will be incorporated in the Contract in addition to the conditions herein.
- 2.3 No variations or amendments of this contract shall be binding on the company unless confirmed by it in writing.

PRICES

- 3.1 The price of the goods shall be subject to VAT at the prevailing rate and the company shall have the right to adjust its prices for any increase in any costs of any kind arising for any reason after the contract date.
- 3.2 Carriage will be charged in accordance with the Company's terms and conditions of business printed on the company's price lists from time to time.

PAYMENT

- 4.1 All invoices are payable nett within 30 days of the date of the Company's invoice and the customer shall pay interest on any overdue amount from the date on which payment was due to that on which payment it is made (whether before or after judgment) on a daily basis at a rate of 4% per annum over the base rate from time to time quoted by HSBC Bank PLC and reimburse to the company any all costs and expenses (including legal costs) incurred in the collection of any overdue amount.

TITLE

- 5.1 Notwithstanding the earlier passing of risk the Company shall remain sole absolute owner of the Goods until such time as the agreed price of the Goods shall have been paid to the Company by the Customer. Until such time the Customer shall be the bailee of the Goods for the Company
- 5.2 The Company shall be entitled at any time before title passes to repossess and dismantle (without being liable for any damage by doing so) all or any of the Goods and for that purpose enter any premises of the Customer.
- 5.3 If a receiver or manager or any other person acting for the customer fails to return any Goods the property of the Company, the return of which has been demanded in accordance with these conditions, he shall pay the Company as agreed and liquidated damages for detinue and/or conversion, treble the agreed price of the Goods.

RISK AND DELIVERY

- 6.1 Goods are delivered to the Customer when the company makes them available to the customer or any agent of the Customer or any carrier (who shall be the customer's agent whoever pays his charges) at the Company's premises or other delivery point agreed by the Company and risk in the goods passes when the goods are delivered to the customer.
- 6.2 The Company shall not be liable for any penalty loss injury damage or expense arising from the delay in delivery or performance from any cause at all nor shall any such delay or failure entitle the customer to refuse to accept any delivery or performance or repudiate the Contract.
- 6.3 Any dates quoted by the Company for delivery of the Goods are approximate only and shall not form part of the Contract and the Customer acknowledges that in the performance expected of the Company no regard has been paid to any quoted delivery dates.
- 6.4 If the Customer fails to take delivery of the Goods or any part of them on the due date and fails to provide any instructions documents licenses consents or authorisations required to enable the Goods to be delivered on the due date, the Company shall be entitled upon giving written notice to the Customer to store or arrange for the storage of Goods, and then risk in the goods shall

pass to the customer delivery shall be deemed to have taken place and the Customer shall pay the Company all costs and expenses including storage and insurance charges arising from its failure.

CLAIMS NOTIFICATION

- 7.1 Any claim for non-delivery of any Goods shall be notified in writing by the customer to the company within 10 days of date of the Companies invoice.
- 7.2 Any claim that any Goods have been delivered damaged or not of correct quantity or do not comply with their description shall be notified by the Customer to the Company within 7 days of their delivery.
- 7.3 Any alleged defect shall be notified by the Customer in writing within 7 days of delivery of the Goods or in the case of any defect which is not reasonably apparent on inspection within 7 days of the defect coming to the Customers attention and in any event within one month from the date of delivery.
- 7.4 The Company shall have no liability with regard to any claim in respect of which the Customer has not complied with the provisions of this condition.

SCOPE OF CONTRACT

- 8.1 Under no circumstances shall the Company have any liability of whatever kind for:
- 8.2 Any defects resulting from wear and tear accident improper use by the Customer or use by the Customer otherwise than in accordance with the instructions or advice of the Company or the manufacturer of any Goods or neglect or from any instructions or materials provided by the Customer.
- 8.3 Any goods which have been adjusted modified or repaired otherwise than by the Company.
- 8.4 Any technical information recommendations statements or advice furnished by the Company its servants or agents not given in writing in response to a specific written request from the Customer before the Contract is made.

EXTENT OF LIABILITY

- 9.1 The Company shall have no liability to the Customer (other than liability for death or personal injury resulting from the Company's negligence) for any loss or damage of any nature arising from any breach of any express or implied warranty

or condition of the Contract or any negligence, breach of statutory or other duty on the part of the Company or in any other way out of or in connection with the performance or purported performance of or failure to perform the Contract except in accordance with this condition.

- 9.2 If the customer establishes that any Goods have not been delivered have been delivered damaged, are not of the correct quantity, do not comply with their description or are defective, the Company shall, as its option replace with similar Goods any Goods which are missing, lost or damaged, do not comply with their description or which are defective allow the Customer credit for their invoice value or repair any damaged Goods.
- 9.3 Where the Company is liable in accordance with this condition in respect of only some or part of the Goods the Contract shall remain in full force and effect in respect of the other or other parts of the goods and no set-off or other claim shall be made by the customer against or in respect of such other or other parts of the Goods.
- 9.4 No claim against the Company shall be entertained for any defect arising from adjustments alterations or other work which has been done to the goods by any person other than the Company.
- 9.5 In no circumstances shall the liability of the Company to Customer under this condition exceed the invoice value of the goods.

FORCE MAJOR

- 10.1 The Company shall not be liable for any failure in the performance of any of its obligations under the Contract caused by factors outside its control.

LAW & CONSTRUCTION

- 11.1 The Contract shall be governed by English Law and the Customer consents to the exclusive jurisdiction of the English courts in all matters regarding the Contract.
- 11.2 If any provision of these conditions is held by any court or other competent authority to be void or unenforceable in whole or in part these conditions shall continue to be valid as to the other provisions thereof and the remainder of the affected provision.
- 11.3 The headings of conditions are for convenience only and shall not affect their interpretation.



THE LIMEHOUSE LAMP COMPANY LTD

The Limehouse Lamp Company (UK Head Office)
Units 32/33 Mackley Industrial Estate, Henfield Road, Small Dole, West Sussex BN5 9XR
T: 00(44)1273 497070 F: 00(44)1273 497071
E: info@limehouselighting.com W: www.limehouselighting.co.uk

The Limehouse Lamp Company (USA)
5113 Forsyth Commerce Rd, Orlando, FL 32807
T: (844) 857-6337 F: (407) 894-2215
E: ussales@limehouselighting.com W: www.limehouselighting.com